



We serve you all the best!

PRIVATE TOURS



Safety and Privacy





SAWADDEE KHA/KRUB

Welcome

AP GOOD@TRAVEL is a licensed tour operator based in Chiang Mai, Thailand second largest city with rich cultural and historical heritage in northern Thailand.

We are specialized in customized private tours. Whether you are a group or traveling solo - We offer something to everyone. We have always gone the extra mile to make your trip as interesting and pleasant as possible. Let us be the one who personalizes your journeys to discover the world independently.

Reasons why you should do a Tour with us!

Because we provide:

- Private tour
- A variety of tours that is perfect for those of you who want to see and do as much as possible, even if time is short.
- Knowledgeable and fun-loving tour guide
- Transportation and Experienced and Licensed driver
- Travel insurance
- Customization
- Reliability
- Department of Tourism License no. 21/01124



AP GOOD @ TRAVEL (LICENSE NO. 21/01124)
14/1 Moo 8, Samoeng Tai, Samoeng, Chiang Mai 50250 Thailand
Tel. / WhatsApp / Line: +66801256611
E-mail: apgoodattravel@gmail.com www.apgoodattravel.com



CARD PAYMENT

We accept the following card types:

- Visa
- Mastercard
- JCB
- UnionPay
- Amex

We charge card fee 3.5% on top of the total amount.



Optional cost for Tour Guide

1. Japanese Tour Guide = No additional charge
2. Chinese Tour Guide = 500 Baht / program
3. Spanish Tour Guide = 1,500 Baht / program
4. French Tour Guide = 1,500 Baht / program
5. German Tour Guide = 1,500 Baht / program
6. Italian Tour Guide = 1,500 Baht / program

Please make a booking in advance.



AP GOOD @ TRAVEL (LICENSE NO. 21/01124)
14/1 Moo 8, Samoeng Tai, Samoeng, Chiang Mai 50250 Thailand
Tel. / WhatsApp / Line: +66801256611
E-mail: apgoodattravel@gmail.com www.apgoodattravel.com



HALF DAY SIGHTSEEING TOUR

TOUR INCLUDES :

Round trip transfer from/to the hotel, transportation for tour (VIP air-con Car/ Van), professional English speaking guide, admission fees, drinking water and travel accident insurance.

TOUR EXCLUDES:

Other optional tours & meals than mentioned in the program, personal expenses.

Note

1. Prices are quoted in Thai Baht.
2. Rates are subject to change without prior notice.
3. Children price:

- Children under 2 years old
- Children 2- 6 years old
- Children 7-9 years old
- Children from 10 years and above

Free

Charge 50 % from Adult Price

Charge 80 % from Adult Price

Charge Adult Price



AP GOOD @ TRAVEL (LICENSE NO. 21/01124)
14/1 Moo 8, Samoeng Tai, Samoeng, Chiang Mai 50250 Thailand
Tel. / WhatsApp / Line: +66801256611
E-mail: apgoodattravel@gmail.com www.apgoodattravel.com



AP-01: Half Day Chiang Mai City and Cultural tour by Tuk Tuk or Car



We depart from your hotel by **Electric Tuk Tuk**, our popular local transportation. Chiang Mai has had a long and independent history. First, we visit **Tapae Gate**, the main entrance to the old walled city. See the crumbling walls and hear about Chiang Mai's rich past. Following this, we visit the **Three Kings Monument and Chiang Mai City Arts & Cultural Centre** to learn more about the rich history, art and culture of the city. Finally, we visit **Chedi Luang Temple** which is Temple of the big stupa which was built at the end of 14th century. Also on the temple grounds is the city pillar (Lak Mueang) of Chiang Mai, named Sao Inthakin. Then, we walk to **Pantao Temple** which is the teak Lanna viharn. It is constructed of moulded teak panels and supported by giant teak pillars. Inside the temple contains temple bells, ceramics, wooden Buddha & manuscripts. Finally, we visit **Waroros Market** which is the biggest local market in Chiang Mai where lots of Thai locals do their shopping. Here you will find a lot of goods, such as clothes, ethnic foods, vegetables, fruits, herbs, and flowers.

SERVICE TYPE	PRICES PER PERSON IN THAI BAHT					
	1 PAX	2 PAX	3 PAX	4-5 PAX	6-7 PAX	8 PAX UP
Private Tour (3 ½ - 4 hours)	3,500	2,000	1,700	1,500	1,400	1,350

TOUR INCLUDES : Roundtrip transfer from/to the hotel, **transportation for tour by Tuk Tuk**, professional English speaking guide, admission fees, **Snack /Food testing**, drinking water and travel accident insurance.

TOUR EXCLUDES : Other optional tours & meals than mentioned in the program, personal expenses, extra food.

Remark:

- Chiang Mai City Arts & Cultural Centre is closed on Monday and Tuesday.
- Program may be subject to change due to available schedule and any other unforeseen reasons.



AP GOOD @ TRAVEL (LICENSE NO. 21/01124)
14/1 Moo 8, Samoeng Tai, Samoeng, Chiang Mai 50250 Thailand
Tel. / WhatsApp / Line: +66801256611
E-mail: apgoodattravel@gmail.com www.apgoodattravel.com





AP-02: Half Day Chiang Mai City and Cultural tour by TukTuk, Samlor and Red car



Chiang Mai has had a long historical and cultural heritage. You will be introduced to the culture and history of the city on this tour. We go to **Waroros Market by TukTuk**. This market is the biggest local market in Chiang Mai where lots of Thai locals do their shopping. After that, we **hop on a pedal-powered trishaw (Samlor) head to explore the centre of old town and visit Tapae Gate**, the main entrance to the old walled city. See the crumbling walls and hear about Chiang Mai's rich past. Then, we visit the **Three Kings Monument and walk to Pantao Temple** which is the teak Lanna viharn. It is constructed of moulded teak panels and supported by giant teak pillars. Inside the temple contains temple bells, ceramics, wooden Buddha & manuscripts. Following this, we continue to **Chedi Luang Temple (The temple of the Great Stupa)** which is an impressive monument that once housed the country's famed Emer ald Buddha. Also, on the temple grounds is the city pillar (Lak Mueang) of Chiang Mai. We return back to Hotel by a **Red Car, a local transportation in Chiang Mai**.

SERVICE TYPE	PRICES PER PERSON IN THAI BAHT					
	1 PAX	2 PAX	3 PAX	4-5 PAX	6-7 PAX	8 PAX UP
Private Tour (3 ½ - 4 hours)	4,000	2,200	1,850	1,600	1,450	1,350

TOUR INCLUDES : Roundtrip transfer from/to the hotel, **transportation for tour by TukTuk, Samlor, walk and Red car**, professional English speaking guide, **admission fees, Snack /Food testing, drinking water and travel accident insurance.**

TOUR EXCLUDES : Other optional tours & meals than mentioned in the program, personal expenses.

Remark: Program may be subject to change due to available schedule and any other unforeseen reasons.



AP GOOD @ TRAVEL (LICENSE NO. 21/01124)
14/1 Moo 8, Samoeng Tai, Samoeng, Chiang Mai 50250 Thailand
Tel. / WhatsApp / Line: +66801256611
E-mail: apgoodattravel@gmail.com www.apgoodattravel.com



AP-03: Half Day Doi Suthep Temple and Palad Temple



We depart from your hotel to Doi Suthep - Pui National Park which takes about a 30-minute drive. First, we visit **Palad Temple or Wat Pha Lat** – while most people head to the top of Doi Suthep to visit the golden chedi of Wat Phra That Doi Suthep, many don't realize there's another gem hiding part way up the mountain. While it is not a particularly beautiful temple building, it features magical temple grounds including a waterfall, forest paths and stunning views of the city. Then, continue to visit **Wat Phra That Doi Suthep or Doi Suthep Temple**, one of northern Thailand's most important and beautiful temples, located near the top of Doi Suthep (Mount Suthep). It is a place of worship, dates back to the year 1373 when the first Chedi was built. It is an important pilgrimage spot for the devout and is sacred site to many Thai people. Visitors can take the 306 steps staircase or ride on a cable car to reach the pagoda. **Enjoy the magnificence of the temple with its Golden Chedi glowing and spectacular views of Chiang Mai City and its surroundings. A must visit!**

SERVICE TYPE	PRICES PER PERSON IN THAI BAHT					
	1 PAX	2 PAX	3 PAX	4-5 PAX	6-7 PAX	8 PAX UP
Private Tour (3 ½ - 4 hours)	3,500	2,000	1,800	1,500	1,350	1,250

TOUR INCLUDES : Roundtrip transfer from/to the hotel, transportation for tour (VIP air-con Car/ Van), professional English speaking guide, admission fees, drinking water and travel accident insurance.

TOUR EXCLUDES : Other optional tours & meals than mentioned in the program, personal expenses.

Remark: Program may be subject to change due to available schedule and any other unforeseen reasons.



AP GOOD @ TRAVEL (LICENSE NO. 21/01124)
14/1 Moo 8, Samoeng Tai, Samoeng, Chiang Mai 50250 Thailand
Tel. / WhatsApp / Line: +66801256611
E-mail: apgoodattravel@gmail.com www.apgoodattravel.com



AP-04: Morning Buddhist Culture, Doi Suthep Temple and Jing Jai Market on Weekend OR Waroros and Fruit market on Weekday



We depart from your hotel early in the morning around 06:30 a.m. and drive to the foot of Doi Suthep (Mounth Suthep). Here we will **participate in Morning Buddhist Alms giving to Buddhist monks and get a blessing**. Then, we drive up to Doi Suthep Temple. The morning is the best time to visit this tranquil place, as a beam of light from the rising sun brightens the Golden Pagoda. **Wat Phra That Doi Suthep or Doi Suthep Temple**, one of northern Thailand's most important and beautiful temples. Enjoy the magnificence of the temple with its Golden Chedi glowing and spectacular views of Chiang Mai City and its surroundings. After that, drive down to Chiang Mai city to **Jing Jai Market which is the Green market in Chiang Mai where open on weekend (Saturday and Sunday)**. There is a plethora of local fresh produce and food much of it organic. You can find a handmade and creative product from this market. The stall holders are all very friendly and are more than happy to tell you about their wares and offer you samples to taste.

On Weekend (Monday - Friday), we will visit Waroros and fruit Market which is the biggest local market in Chiang Mai where lots of Thai locals do their shopping. Here you will find a lot of goods, such as clothes, ethnic foods, vegetables, fruits, herbs, and flowers.

SERVICE TYPE	PRICES PER PERSON IN THAI BAHT					
	1 PAX	2 PAX	3 PAX	4-5 PAX	6-7 PAX	8 PAX UP
Private Tour (4 ½ -5 hours)	4,000	2,300	2,000	1,750	1,500	1,400

TOUR INCLUDES : Roundtrip transfer from/to the hotel, transportation for tour (VIP air-con Car/ Van), professional English speaking guide, **alms (food), Snack /Food testing**, admission fees, drinking water and travel accident insurance.

TOUR EXCLUDES : Other optional tours & meals than mentioned in the program, personal expenses.

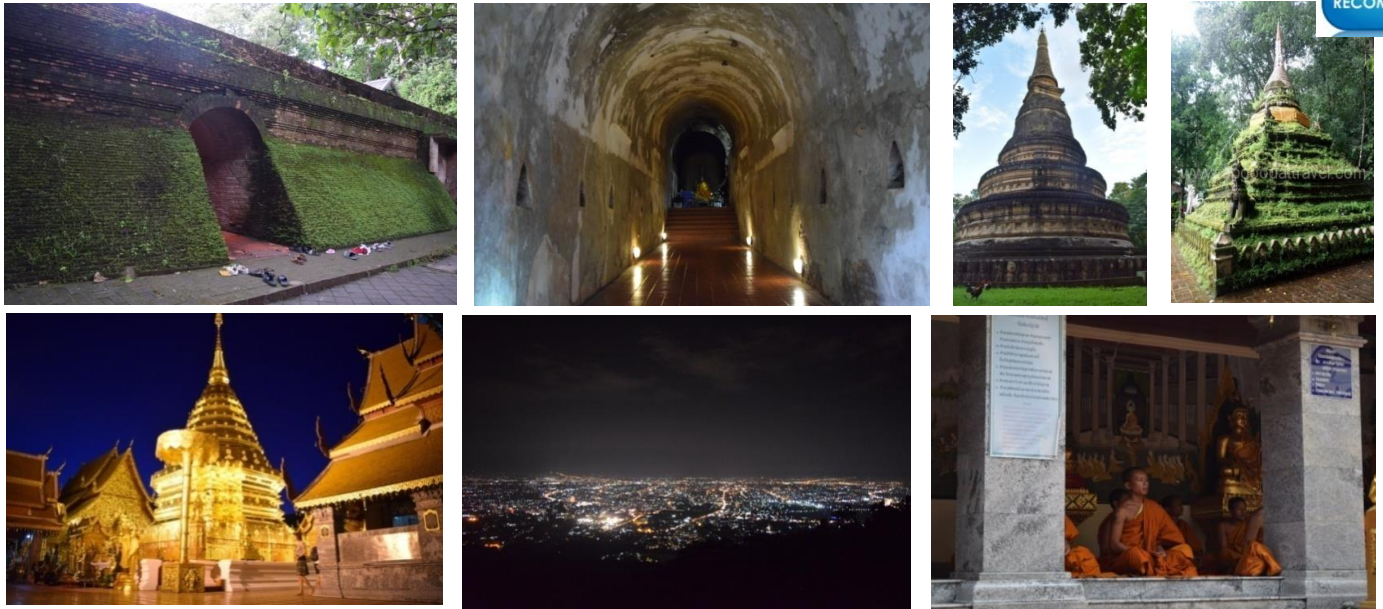
Remark: Program may be subject to change due to available schedule and any other unforeseen reasons.



AP GOOD @ TRAVEL (LICENSE NO. 21/01124)
14/1 Moo 8, Samoeng Tai, Samoeng, Chiang Mai 50250 Thailand
Tel. / WhatsApp / Line: +66801256611
E-mail: apgoodattravel@gmail.com www.apgoodattravel.com



AP-05: Umong Temple and Monk Chanting at Doi Suthep Temple



We depart from your hotel at 02:30 p.m. to **Wat Umong (Suan Buddha Dhamma) – Temple of the tunnels and Buddha Dhamma garden - or Umong Temple** located just west of Chiang Mai city near Doi Suthep mountain. The temple was abandoned during the 15th century. In 1948 the temple was restored and was reopened as a center for meditation and Buddhist teachings. The temple’s setting in a forested area with a natural lake makes Umong temple an excellent place for meditation. Then, we continue to visit **Palad Temple** – while most people head to the top of Doi Suthep to visit the golden chedi of Wat Phra That Doi Suthep, many don’t realize there’s another gem hiding part way up the mountain. While it is not a particularly beautiful temple building, it features magical temple grounds including a waterfall, forest paths and stunning views of the city. Finally, we visit **Wat Phra That Doi Suthep or Doi Suthep Temple**, one of northern Thailand’s most important and beautiful temples, located near the top of Doi Suthep (Mount Suthep). It is place of worship, dates back to the year 1373 when the first Chedi was built. It is an important pilgrimage spot for the devout and is sacred site to many Thai people. Visitors can take the 306 steps staircase or ride on a cable car to reach the pagodas. **Experience the monks chanting which is a very spiritual experience. Enjoy the magnificence of the temple with its Golden Chedi glowing and spectacular views of Chiang Mai City and its surroundings at sunset. A must visit!**

SERVICE TYPE	PRICES PER PERSON IN THAI BAHT					
	1 PAX	2 PAX	3 PAX	4-5 PAX	6-7 PAX	8 PAX UP
Private Tour (4 ½ -5 hours)	4,000	2,200	1,850	1,600	1,450	1,300

TOUR INCLUDES : Roundtrip transfer from/to the hotel, transportation for tour (VIP air-con Car/ Van), professional English speaking guide, admission fees, drinking water and travel accident insurance.

TOUR EXCLUDES : Other optional tours & meals than mentioned in the program, personal expenses.

Remark: Program may be subject to change due to available schedule and any other unforeseen reasons.



AP GOOD @ TRAVEL (LICENSE NO. 21/01124)
14/1 Moo 8, Samoeng Tai, Samoeng, Chiang Mai 50250 Thailand
Tel. / WhatsApp / Line: +66801256611
E-mail: apgoodattravel@gmail.com www.apgoodattravel.com



AP-06: Half Day Doi Suthep Temple and city temples



We depart from your hotel to Doi Suthep - Pui National Park which takes about a 45-minute drive. First, we visit **Wat Phra That Doi Suthep or Doi Suthep Temple**, one of northern Thailand's most important and beautiful temples, located near the top of Doi Suthep (Mount Suthep). It is a place of worship, dates back to the year 1373 when the first Chedi was built. It is an important pilgrimage spot for the devout and is sacred site to many Thai people. Visitors can take the 306 steps staircase or ride on a cable car to reach the pagoda. **Enjoy the magnificence of the temple with its Golden Chedi glowing and spectacular views of Chiang Mai City and its surroundings.** Then, we drive down to the city. We visit **Chedi Luang Temple (The temple of the Great Stupa)** which is an impressive monument that once housed the country's famed Emerald Buddha. Also on the temple grounds is the city pillar (Lak Mueang) of Chiang Mai. Finally, we visit **Pantao Temple** which is the teak Lannaviharn. It is constructed of moulded teak panels and supported by giant teak pillars. Inside the temple contains temple bells, ceramics, wooden Buddha & manuscripts.

SERVICE TYPE	PRICES PER PERSON IN THAI BAHT					
	1 PAX	2 PAX	3 PAX	4-5 PAX	6-7 PAX	8 PAX UP
Private Tour (4-4 ½ hours)	4,000	2,200	1,850	1,600	1,450	1,300

TOUR INCLUDES : Roundtrip transfer from/to the hotel, transportation for tour (VIP air-con Car/ Van), professional English speaking guide, admission fees, drinking water and travel accident insurance.

TOUR EXCLUDES : Other optional tours & meals than mentioned in the program, personal expenses.

Remark: Program may be subject to change due to available schedule and any other unforeseen reasons.



AP GOOD @ TRAVEL (LICENSE NO. 21/01124)
14/1 Moo 8, Samoeng Tai, Samoeng, Chiang Mai 50250 Thailand
Tel. / WhatsApp / Line: +66801256611
E-mail: apgoodattravel@gmail.com www.apgoodattravel.com



AP-07: Half Day Doi Suthep Temple and Mae Ping River Cruise



We depart from your hotel to Mae Ping River Cruise. You will leave from the jetty at Wat Chai Mongkol and travel north out of the city. The river soon shows its true rural identity as city bridges pass from view and are replaced by scenes of wide water stretching from green tree lined bank to bank. Give you the opportunity to see Chiang Mai from a different angle. The boat chugs on to reach its destination point the “Thai Farmer’s House”. Relax over a herb juice, together with an Ice-cream. After that, we drive to Doi Suthep Temple. **Wat Phra That Doi Suthep or Doi Suthep Temple**, one of northern Thailand’s most important and beautiful temples, located near the top of Doi Suthep (Mount Suthep). It is an important pilgrimage spot for the devout and is sacred site to many Thai people. Visitors can take the 306 steps staircase or ride on a cable car to reach the pagoda. Enjoy the magnificence of the temple with its Golden Chedi glowing and spectacular views of Chiang Mai City and its surroundings.

SERVICE TYPE	PRICES PER PERSON IN THAI BAHT					
	1 PAX	2 PAX	3 PAX	4-5 PAX	6-7 PAX	8 PAX UP
Private Tour (4 ½ -5 hours)	5,000	2,750	2,300	2,000	1,850	1,750

TOUR INCLUDES : Roundtrip transfer from/to the hotel, transportation for tour (VIP air-con Car/ Van), professional English speaking guide, admission fees, drinking water and travel accident insurance.

TOUR EXCLUDES : Other optional tours & meals than mentioned in the program, personal expenses.

Remark: Program may be subject to change due to available schedule and any other unforeseen reasons.



AP GOOD @ TRAVEL (LICENSE NO. 21/01124)
14/1 Moo 8, Samoeng Tai, Samoeng, Chiang Mai 50250 Thailand
Tel. / WhatsApp / Line: +66801256611
E-mail: apgoodattravel@gmail.com www.apgoodattravel.com



AP-08: Half Day Doi Suthep Temple and Hmong Hill tribe



We depart from your hotel to Doi Suthep-Pui National Park which takes about a 45-minute drive. First, we visit **Wat Phra That Doi Suthep or Doi Suthep Temple**, one of northern Thailand's most important and beautiful temples, located near the top of Doi Suthep (Mount Suthep). It is a place of worship, dates back to the year 1373 when the first Chedi was built. It is an important pilgrimage spot for the devout and is sacred site to many Thai people. **Enjoy the magnificence of the temple with its Golden Chedi glowing and spectacular views of Chiang Mai City and its surroundings.** Then, continue to **Doi Pui Hmong Hill tribe village**. Enjoy a fresh cup of locally-grown Arabica coffee and hear about the North's flourishing coffee industry. Spend time exploring the Hmong Hill tribe village, meeting the inhabitants and learning about the traditions and customs of this unique ethnic group.

SERVICE TYPE	PRICES PER PERSON IN THAI BAHT					
	1 PAX	2 PAX	3 PAX	4-5 PAX	6-7 PAX	8 PAX UP
Private Tour (4 ½ -5 hours)	4,500	2,500	2,000	1,700	1,550	1,450

TOUR INCLUDES : Roundtrip transfer from/to the hotel, transportation for tour (VIP air-con Car/ Van), professional English speaking guide, admission fees, drinking water and travel accident insurance.

TOUR EXCLUDES : Other optional tours & meals than mentioned in the program, personal expenses.

Remark: Program may be subject to change due to available schedule and any other unforeseen reasons.



AP GOOD @ TRAVEL (LICENSE NO. 21/01124)
14/1 Moo 8, Samoeng Tai, Samoeng, Chiang Mai 50250 Thailand
Tel. / WhatsApp / Line: +66801256611
E-mail: apgoodattravel@gmail.com www.apgoodattravel.com



AP-09: Half Day Tea Plantation Tour at Araksa



We depart from your hotel to **Araksa Tea plantation** which takes about a 1½ -hour drive. Start by entering the tea plantation which is absolutely beautiful and peaceful, you will be greeted by staff who will explain the different processes and methods used to cultivate young tea plants. After that, **you will get to pick your own tea leaves which is fun and relaxing and see them roasted. Then the best part - tea time! , served with delicious Thai snacks.**

Pickup time at 07:30 for morning tour

Pickup time at 12:30 p.m. for afternoon tour

SERVICE TYPE	PRICES PER PERSON IN THAI BAHT					
	1 PAX	2 PAX	3 PAX	4-5 PAX	6-7 PAX	8 PAX UP
Private transfer round trip with tour Guide & Tea plantation tour (Joined in activity) (5 hours)	5,000	2,750	2,300	2,000	1,850	1,750

TOUR INCLUDES : Private Roundtrip transfer from/to the hotel by VIP air-con Car/ Van, professional English speaking guide, admission fees, drinking water and travel accident insurance.

TOUR EXCLUDES : Other optional tours & meals than mentioned in the program, personal expenses.

Remark:

- You will be join activities with other group. We try and make our tour as fun and interactive as possible and encourage our guests to interact with each other. You'll have a chance to meet others while still being able to step away after the tour is over.
- Program may be subject to change due to available schedule and any other unforeseen reasons.



AP GOOD @ TRAVEL (LICENSE NO. 21/01124)
14/1 Moo 8, Samoeng Tai, Samoeng, Chiang Mai 50250 Thailand
Tel. / WhatsApp / Line: +66801256611
E-mail: apgoodattravel@gmail.com www.apgoodattravel.com



AP-10: Half Day Long Neck hill tribe and Hmong hill tribe village



We depart from your hotel to **Hmong hill tribe village** which takes about 1 hours along rolling green hills. The Hmong Hill Tribe originally comes from Southern China. The first Hmong villages were established in Northern Thailand on the end of the 19th century. First, we visit the “Community Products Center” a fantastic workshop where the locals produce clothing and accessories using traditional materials and techniques. The Hmong of Chiang Mai Province still grow hemp and painstakingly produce woven cloth from the plant's fibrous stalks. The hemp cloth is then colored using natural dyes produced from the indigo plant and other native species. The cloth is then decorated using a batik technique that uses natural bee's wax. After that, we drive to **Karen Long Neck hill tribe village**. Civilization and materialism change their lives from hill tribes who live with a peaceful life, behind the mountains, to people who live rush in the city. Some cultures are almost gone from the minds of the new generation and no one knows when it will be forgotten.

SERVICE TYPE	PRICES PER PERSON IN THAI BAHT					
	1 PAX	2 PAX	3 PAX	4-5 PAX	6-7 PAX	8 PAX UP
Private Tour (4 - 4 ½ hours)	4,500	2,500	2,000	1,700	1,550	1,450

TOUR INCLUDES : Roundtrip transfer from/to the hotel, transportation for tour (VIP air-con Car/ Van), professional English speaking guide, admission fees, drinking water and travel accident insurance.

TOUR EXCLUDES : Other optional tours & meals than mentioned in the program, personal expenses.

Remark: Program may be subject to change due to available schedule and any other unforeseen reasons.



AP GOOD @ TRAVEL (LICENSE NO. 21/01124)
14/1 Moo 8, Samoeng Tai, Samoeng, Chiang Mai 50250 Thailand
Tel. / WhatsApp / Line: +66801256611
E-mail: apgoodattravel@gmail.com www.apgoodattravel.com



AP-11 Half Day Long Neck hill tribe & Elephant POOPOO PAPER Park



We depart from your hotel which takes about a 30-minute drive to **Karen Long Neck hill tribe village**. Civilization and materialism change their lives from hill tribes who live with a peaceful life, behind the mountains, to people who live rush in the city. Some cultures are almost gone from the minds of the new generation and no one knows when it will be forgotten. After this, we continue to visit **Elephant POOPOOPAPER Park**. Here you will learn how to make an Elephant POOPOOPAPER. You will make a 1 bookmark for taking it home.

SERVICE TYPE	PRICES PER PERSON IN THAI BAHT					
	1 PAX	2 PAX	3 PAX	4-5 PAX	6-7 PAX	8 PAX UP
Private Tour (3-4 hours)	3,500	2,000	1,800	1,500	1,350	1,250

TOUR INCLUDES : Roundtrip transfer from/to the hotel, transportation for tour (VIP air-con Car/ Van), professional English speaking guide, admission fees, drinking water and travel accident insurance.

TOUR EXCLUDES : Other optional tour & meals than mentioned in the program, personal expenses

Remark: Program may be subject to change due to available schedule and any other unforeseen reasons.



AP GOOD @ TRAVEL (LICENSE NO. 21/01124)
14/1 Moo 8, Samoeng Tai, Samoeng, Chiang Mai 50250 Thailand
Tel. / WhatsApp / Line: +66801256611
E-mail: apgoodattravel@gmail.com www.apgoodattravel.com



AP-12: Half Day Phra That Doi Kham Temple and Royal Park Rajapruek



We depart from your hotel to southern area which takes about a thirty-minute drive. First, we visit **Phra That Doi Kham Temple**, means “Temple of Golden Mountain”. The temple was built in B.E.1230 and is located on top of a mountain overlooking Chiang Mai city. The 17 meters high Sitting Buddha image on the hill top is visible from miles away. Then, continue to visit **Royal Park Rajapruek**. It is one of the most popular agro-tourism places of Chiang Mai and is counted as the center of Agricultural research. You will discover countless number of plants and varied kinds of flowers from all over the world.

SERVICE TYPE	PRICES PER PERSON IN THAI BAHT					
	1 PAX	2 PAX	3 PAX	4-5 PAX	6-7 PAX	8 PAX UP
Private Tour (3 ½ -4 hours)	3,500	2,000	1,800	1,500	1,350	1,250

TOUR INCLUDES : Roundtrip transfer from/to the hotel, transportation for tour (VIP air-con Car/ Van), professional English speaking guide, admission fees, drinking water and travel accident insurance.

TOUR EXCLUDES : Other optional tours & meals than mentioned in the program, personal expenses.

Remark: Program may be subject to change due to available schedule and any other unforeseen reasons.



AP GOOD @ TRAVEL (LICENSE NO. 21/01124)
14/1 Moo 8, Samoeng Tai, Samoeng, Chiang Mai 50250 Thailand
Tel. / WhatsApp / Line: +66801256611
E-mail: apgoodattravel@gmail.com www.apgoodattravel.com



AP-13: Half day Sticky Waterfall and Market tour



We depart from your hotel to northern of Chiang Mai city which takes about a 1 ½ hours drive to **Bua Thong Waterfall** which is a multi-tiered waterfall made of limestone deposits. First, we stop at the local market where the local people go shopping. We buy some a seasonal fruit and snack for picnic. Then, we drive to **Bua Thong Waterfall**. This waterfall is known as “The Sticky Waterfall”. The limestone is amazing. It actually sticks to your feet and allow you to walk up and down the waterfall with rushing water all around. You will enjoy a climb up and down as like as Spider man. What an amazing experience!

SERVICE TYPE	PRICES PER PERSON IN THAI BAHT					
	1 PAX	2 PAX	3 PAX	4-5 PAX	6-7 PAX	8 PAX UP
Private Tour (5 hours)	4,500	2,500	2,000	1,700	1,550	1,450

TOUR INCLUDES : Roundtrip transfer from/to the hotel, transportation for tour (VIP air-con Car/Van), professional English speaking guide, admission fees, **Snack /Fruit testing**, drinking water and travel accident insurance.

TOUR EXCLUDES : Other optional tours & meals than mentioned in the program, personal expenses

Remark: Program may be subject to change due to available schedule and any other unforeseen reasons.



AP GOOD @ TRAVEL (LICENSE NO. 21/01124)
14/1 Moo 8, Samoeng Tai, Samoeng, Chiang Mai 50250 Thailand
Tel. / WhatsApp / Line: +66801256611
E-mail: apgoodattravel@gmail.com www.apgoodattravel.com



AP-14: Half Day Hmong Hill tribe and Queen Sirikit Botanic Garden



We depart from your hotel to **Hmong hill tribe village** which takes about 1 hours along rolling green hills. The Hmong Hill Tribe originally comes from Southern China. The first Hmong villages were established in Northern Thailand on the end of the 19th century. First, we visit the **“Community Products Center”** a fantastic workshop where the locals produce clothing and accessories using traditional materials and techniques. The Hmong of Chiang Mai Province still grow hemp and painstakingly produce woven cloth from the plant's fibrous stalks. The hemp cloth is then colored using natural dyes produced from the indigo plant and other native species. The cloth is then decorated using a batik technique that uses natural bee's wax. After that, we walk around village to see their lifestyles. Then, drive to **Queen Sirikit Botanic Garden**. Here is one of the most renowned gardens in Thailand and a major hub for scientific research. Visitors can view beautiful Thai orchids and palms while walking around the expansive grounds. These extensive gardens have magnificent greenhouses with a large variety of ferns, orchids, bromeliads that are endemic to a tropical climate and also plants that grow in arid zones.

SERVICE TYPE	PRICES PER PERSON IN THAI BAHT					
	1 PAX	2 PAX	3 PAX	4-5 PAX	6-7 PAX	8 PAX UP
Private Tour (4 - 4 ½ hours)	4,500	2,500	2,000	1,700	1,550	1,450

TOUR INCLUDES : Roundtrip transfer from/to the hotel, transportation for tour (VIP air-con Car/Van), professional English speaking guide, admission fees, drinking water and travel accident insurance.

TOUR EXCLUDES : Other optional tours & meals than mentioned in the program, personal expenses

Remark: Program may be subject to change due to available schedule and any other unforeseen reasons.



AP GOOD @ TRAVEL (LICENSE NO. 21/01124)
14/1 Moo 8, Samoeng Tai, Samoeng, Chiang Mai 50250 Thailand
Tel. / WhatsApp / Line: +66801256611
E-mail: apgoodattravel@gmail.com www.apgoodattravel.com



AP-15: Half Day Long Neck hill tribe and Zipline 24 Platforms



We depart from your hotel which takes about a 30-minute drive to **Karen Long Neck hill tribe village**. Civilization and materialism change their lives from hill tribes who live with a peaceful life, behind the mountains, to people who live rush in the city. Some cultures are almost gone from the minds of the new generation and no one knows when it will be forgotten. After this, we continue to **Phoenix Adventure Park**. Here you will entertain yourself with **exciting activities with Zipline 24 Platforms** (14 Ziplines, 1 Lego Bridge, 1 Grass walk, 1 Window walk, 1 Miller belt, 5 Spiral staircase and Miniature train for round place).

SERVICE TYPE	PRICES PER PERSON IN THAI BAHT					
	1 PAX	2 PAX	3 PAX	4-5 PAX	6-7 PAX	8 PAX UP
Private Tour (4½-5 hours)	5,000	3,200	2,700	2,500	2,300	2,200

TOUR INCLUDES : Roundtrip transfer from/to the hotel, transportation for tour (VIP air-con Car/ Van), professional English speaking guide, admission fees, drinking water and travel accident insurance.

TOUR EXCLUDES : Other optional tour & meals than mentioned in the program, personal expenses

Remark:

- Age between 6 - 65 years old, minimum height 120 cm and maximum weight 120 Kilograms (264 pounds) for Zipline program. Children and adult is the same price.
- Program may be subject to change due to available schedule and any other unforeseen reasons.



AP GOOD @ TRAVEL (LICENSE NO. 21/01124)
14/1 Moo 8, Samoeng Tai, Samoeng, Chiang Mai 50250 Thailand
Tel. / WhatsApp / Line: +66801256611
E-mail: apgoodattravel@gmail.com www.apgoodattravel.com



AP-16: Half Day San Kamphaeng Handicraft and Hot Spring



We depart from your hotel to San Kamphaeng District which takes about 30 minutes drive. First, we visit San Kamphaeng Handicraft. **San Kam Pang Handicraft** is one of the best places to watch craftsmen at work. Along both sides of the road are numerous little local factories such as **Thai Silk, Silverware, Lacquerware, Jewelry, Umbrella Making and Celadon**. Then, continue to **San Kamphaeng Hot Spring**. The hot springs are located in a beautiful park, which is really well maintained. There are colorful flowers everywhere. The water from the San Kamphaeng Hot Springs flows from the source through the man-made canal, circling the park. You can sit almost anywhere and soak your feet. **Soaking your feet in the shade is a pretty nice experience**. You can hang your basket on a hook and **boil your eggs**. The temperature of the water reaches 100 degrees Celsius.

SERVICE TYPE	PRICES PER PERSON IN THAI BAHT					
	1 PAX	2 PAX	3 PAX	4-5 PAX	6-7 PAX	8 PAX UP
Private Tour (4-5 hours)	4,000	2,200	1,850	1,600	1,450	1,300

TOUR INCLUDES : Roundtrip transfer from/to the hotel, transportation for tour (VIP air-con Car/ Van), professional English speaking guide, admission fees, drinking water and travel accident insurance.

TOUR EXCLUDES : Other optional tour & meals than mentioned in the program, personal expenses

Remark: Program may be subject to change due to available schedule and any other unforeseen reasons.



AP GOOD @ TRAVEL (LICENSE NO. 21/01124)
14/1 Moo 8, Samoeng Tai, Samoeng, Chiang Mai 50250 Thailand
Tel. / WhatsApp / Line: +66801256611
E-mail: apgoodattravel@gmail.com www.apgoodattravel.com



AP-17: Half Day Lamphun City and Temple



To begin our trip, we start by heading to Lamphun province; a small province that is located 26 kilometers from Chiang Mai and rich in historical sights. First, we visit **Chamthewi Temple** or Ku Kut Temple, commonly referred to a Ku Kut, which was constructed in the Hariphunchai period. The chedi is a square tower which has 5 storeys. Similarly, the chedi is formed like a stepped pyramid. Then, we visit **Queen Chamthewi Monument**. After that, we visit **Phrathat Hariphunchai Temple** which was built during the reign of King Arthitayarat, a descendant of Queen Chamthewi some 800 years ago. A principal landmark is the 46-metre tall golden Chedi whose present appearance was the result of the restoration work in 1443 by a king of Chiang Mai. It has long been regarded as a major place of worship. Other architectural works include the ancient-style brick arch adorned with fine designs and the pair of sculptured lions at the door. There is also a square-shaped Chedi and a Khmer-style Buddha statue. Finally, we continue to visit **San Pa Yang Luang Temple** which is one of the oldest temple of Lanna. This temple has one of the most beautiful wihan of Thailand (top 10 beautiful wihan temple). Every building inside this temple are beautiful especially architecture of wihan is combination between Laos , Myanmar and Thai (Lanna).

SERVICE TYPE	PRICES PER PERSON IN THAI BAHT					
	1 PAX	2 PAX	3 PAX	4-5 PAX	6-7 PAX	8 PAX UP
Private Tour (4-5 hours)	4,000	2,250	2,000	1,750	1,500	1,400

TOUR INCLUDES : Roundtrip transfer from/to the hotel, transportation for tour (VIP air-con Car/ Van), professional English speaking guide, admission fees, drinking water and travel accident insurance.

TOUR EXCLUDES : Other optional tours & meals than mentioned in the program, personal expenses.

Remark: Program may be subject to change due to available schedule and any other unforeseen reasons.



AP GOOD @ TRAVEL (LICENSE NO. 21/01124)
14/1 Moo 8, Samoeng Tai, Samoeng, Chiang Mai 50250 Thailand
Tel. / WhatsApp / Line: +66801256611
E-mail: apgoodattravel@gmail.com www.apgoodattravel.com



AP-18: Half Day Meditation and Monk Chat



We depart from your hotel to practice meditation in Chiang Mai at Wat Suan Dok. First, we visit **Suan Dok Temple or Wat Suan Dok (Flower garden temple) also known as Wat Buppharam**. The temples was built in late 14th century, houses several structures of historical significance. Among them include the principal pagoda that enshrines the Buddha's relics, a garden of whitewashed mausoleums housing the ashes of late Chiang Mai rulers and a large open-air wiharn (assembly hall). After that, we continue to find a quiet corner in which to meditate. **Learn traditional techniques of meditation from Thai Buddhist monk**, discovering how to control the breath and regulate the mind. Discover the importance of meditation in the lives of the Thai people, many of whom practice every day. Spend time practicing meditation, relaxing and purifying the mind and soul. Finally, you will **enjoy this unique opportunity to talk and learn about his life, the country's spiritual beliefs and anything else of interest. This exchange provides a remarkable forum for connecting with Thailand's culture.**

SERVICE TYPE	PRICES PER PERSON IN THAI BAHT					
	1 PAX	2 PAX	3 PAX	4-5 PAX	6-7 PAX	8 PAX UP
Private Tour (3 ½ -4 hours)	3,500	2,000	1,800	1,500	1,350	1,250

TOUR INCLUDES : Roundtrip transfer from/to the hotel, transportation for tour (VIP air-con Car/ Van), professional English speaking guide, admission fees, drinking water and travel accident insurance.

TOUR EXCLUDES : Other optional tours & meals than mentioned in the program, personal expenses.

Remark: Program may be subject to change due to available schedule and any other unforeseen reasons.



AP GOOD @ TRAVEL (LICENSE NO. 21/01124)
14/1 Moo 8, Samoeng Tai, Samoeng, Chiang Mai 50250 Thailand
Tel. / WhatsApp / Line: +66801256611
E-mail: apgoodattravel@gmail.com www.apgoodattravel.com



AP-19: Half Day Thai Elephant Conservation Center and the World's First Elephant Hospital



We start by departing from Chiang Mai at 08:30 a.m. or 01:00 p.m. to **Lampang province** which takes about a 1 hour drive. First, we visit **the Thai Elephant Conservation Center (TECC)**. The TECC was founded in 1993 under Royal Patronage. This establishment cares for more than 50 Asian elephants in a beautiful forest. Beyond being an exciting tourist experience, the TECC is also known for its pioneering work in conservation and science. Here you will **visit baby Elephant and feed the elephant**. Then, continue to **Friends of the Asian elephant** which is the **World's First Elephant Hospital** where looking after the **welfare of elephants throughout Thailand – a service that is desperately needed**. On the way back, we stop at **Mae Tha flea market** to see the jungle food and local snack such as deep fried insects, worm, Etc.

SERVICE TYPE	PRICES PER PERSON IN THAI BAHT					
	1 PAX	2 PAX	3 PAX	4-5 PAX	6-7 PAX	8 PAX UP
Private Tour (4 ½ -5 hours)	5,200	2,750	2,300	2,000	1,850	1,750

TOUR INCLUDES : Roundtrip transfer from/to the hotel, transportation for tour (VIP air-con Car/ Van), professional English speaking guide, admission fees, drinking water and travel accident insurance.

TOUR EXCLUDES : Other optional tours & meals than mentioned in the program, personal expenses.

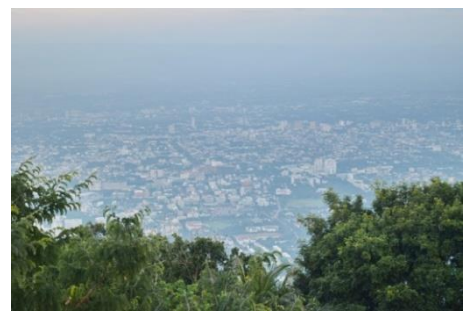
Remark: Program may be subject to change due to available schedule and any other unforeseen reasons.



AP GOOD @ TRAVEL (LICENSE NO. 21/01124)
14/1 Moo 8, Samoeng Tai, Samoeng, Chiang Mai 50250 Thailand
Tel. / WhatsApp / Line: +66801256611
E-mail: apgoodattravel@gmail.com www.apgoodattravel.com



AP-20: Half Day Doi Suthep Temple and see the sunset



We depart from your hotel to Doi Suthep - Pui National Park which takes about a 45-minute drive. First, we visit **Wat Phra That Doi Suthep or Doi Suthep Temple**, one of northern Thailand's most important and beautiful temples, located near the top of Doi Suthep (Mount Suthep). It is a place of worship, dates back to the year 1373 when the first Chedi was built. It is an important pilgrimage spot for the devout and is sacred site to many Thai people. Visitors can take the 306 steps staircase or ride on a cable car to reach the pagoda. **Enjoy the magnificence of the temple with its Golden Chedi glowing and spectacular views of Chiang Mai City and its surroundings.** Then, continue to **Doi Pui view point**. **Enjoy view of Doi Suthep - Pui National park and and see the sunset on the mountain. A must visit!**

SERVICE TYPE	PRICES PER PERSON IN THAI BAHT					
	1 PAX	2 PAX	3 PAX	4-5 PAX	6-7 PAX	8 PAX UP
Private Tour (4 – 4 ½ hours)	4,000	2,200	1,850	1,600	1,450	1,300

TOUR INCLUDES : Roundtrip transfer from/to the hotel, transportation for tour (VIP air-con Car/ Van), professional English speaking guide, admission fees, drinking water and travel accident insurance.

TOUR EXCLUDES : Other optional tours & meals than mentioned in the program, personal expenses.

Remark: Program may be subject to change due to available schedule and any other unforeseen reasons.



AP GOOD @ TRAVEL (LICENSE NO. 21/01124)
14/1 Moo 8, Samoeng Tai, Samoeng, Chiang Mai 50250 Thailand
Tel. / WhatsApp / Line: +66801256611
E-mail: apgoodattravel@gmail.com www.apgoodattravel.com



FULL DAY SIGHTSEEING TOUR

TOUR INCLUDES :

Round trip transfer from/to the hotel, transportation for tour (VIP air-con Car/ Van), professional English speaking guide, admission fees, lunch, drinking water and travel accident insurance.

A special meal can be requested at the time of booking or by adding a request to an existing reservation. We will do our best to supply your preferred choice.

TOUR EXCLUDES:

Other optional tours & meals than mentioned in the program, personal expenses.

Extra options:

We carry a list of the extra options which can be added to your program. If you are interested in adding one or more to your program, please let us know and we will tell you if it is practical and what the additional fee will be.

Shooting, Tiger Kingdom, Zipline, ATV and Long-neck hill tribe

Note

1. Lunch is inclusive for full day tour only
2. Prices are quoted in Thai Baht
3. Rates are subject to change without prior notice.
4. Children price:
 - Children under 2 years old Free
 - Children 2- 6 years old Charge 50 % from Adult Price
 - Children 7-9 years old Charge 80 % from Adult Price
 - Children from 10 years and above Charge Adult Price



AP GOOD @ TRAVEL (LICENSE NO. 21/01124)
14/1 Moo 8, Samoeng Tai, Samoeng, Chiang Mai 50250 Thailand
Tel. / WhatsApp / Line: +66801256611
E-mail: apgoodattravel@gmail.com www.apgoodattravel.com



APF-01: One Day Doi Inthanon National Park



We depart from your hotel to Southern area which takes about a 2-hour drive. **Doi Inthanon National Park is Thailand's highest mountain** which is a true jewel of natural beauty, consisting of rugged mountainous terrain blanketed by lush tropical forests and majestic waterfalls. First, we stop at the highest peak to see incredible panoramic views. Then, travel to **Angkha Nature Trail** to discover Rhododendrons and forest which can only be seen at this high elevation. After that, we visit **twin pagodas** which were built by the Royal Thai Air Force in commemoration of the 60th birthday of Majesties The King and Queen. Next, we visit **Hmong hill tribe Market**. Lunch will be provided at a local restaurant. After lunch, we continue to **Karen hill tribe village** where you can sample the mountain coffee and learn about the culture. **If you visit Chiang Mai in August - November, you will see amazing views of Terraced Rice Fields.** Finally, we drive to **Wachirathan Waterfall**, one of Inthanon's most beautiful waterfalls.

SERVICE TYPE	PRICES PER PERSON IN THAI BAHT					
	1 PAX	2 PAX	3 PAX	4-5 PAX	6-7 PAX	8 PAX UP
Private Tour (8-9 hours)	7,000	3,750	3,200	2,800	2,400	2,200

TOUR INCLUDES : Roundtrip transfer from/to the hotel, transportation for tour (VIP air-con Car/Van), professional English speaking guide, admission fees, lunch, drinking water and travel accident insurance.

TOUR EXCLUDES : Other optional tours & meals than mentioned in the program, personal expenses.

Remark: Program may be subject to change due to available schedule and any other unforeseen reasons.



AP GOOD @ TRAVEL (LICENSE NO. 21/01124)
14/1 Moo 8, Samoeng Tai, Samoeng, Chiang Mai 50250 Thailand
Tel. / WhatsApp / Line: +66801256611
E-mail: apgoodattravel@gmail.com www.apgoodattravel.com



APF-02: One Day Highlight of Chiang Mai



Chiang Mai has had a long and independent history and shows Thai history through its fantastic scenery along Chiangmai's moat, which is surrounded by historical and cultural heritage. First, we visit **Tha Phae Gate** and then continue to **Chedi Luang Temple** which is Temple of the big stupa which was built at the end of 14th century. Following this, we visit **Wat Phra That Doi Suthep or Doi Suthep Temple**, one of northern Thailand's most important and beautiful temples, located near the top of Doi Suthep (Mount Suthep). Enjoy the magnificence of the temple with its Golden Chedi glowing and spectacular views of Chiang Mai City and its surroundings. You will experience the signature dish of this part of the world, "**Khao Soi**" for lunch; the dish is prepared to a very special recipe which brings out the unique flavor of the mild, creamy curry soup. After lunch, we visit "**Thai Farmer's House**". The visitor can discover the basic elements-rice, local herbs, fruits, fishing-all thriving in a chemical-free environment. Relax over a herb juice, together with an Ice-cream. After that, we will travel on **River Cruise** to the city. Give you the opportunity to see Chiang Mai from a different angle. The boat chugs on to reach its destination point the **Waroros Market which is the biggest local market in Chiang Mai** where lots of Thai locals do their shopping. Here you will find a lot of goods, such as clothes, ethnic foods, vegetables, fruits, herbs, and flowers. **What an amazing experience!**

SERVICE TYPE	PRICES PER PERSON IN THAI BAHT					
	1 PAX	2 PAX	3 PAX	4-5 PAX	6-7 PAX	8 PAX UP
Private Tour (7-8 hours)	7,000	3,700	3,200	2,800	2,450	2,250

TOUR INCLUDES : Roundtrip transfer from/to the hotel, transportation for tour (VIP air-con Car/ Van), professional English speaking guide, admission fees, **Lunch (Khao Soi)** , **Snack /Fruit testing**, drinking water and travel accident insurance.

TOUR EXCLUDES : Other optional tours & meals than mentioned in the program, personal expenses.

Remark: Program may be subject to change due to available schedule and any other unforeseen reasons.



AP GOOD @ TRAVEL (LICENSE NO. 21/01124)
14/1 Moo 8, Samoeng Tai, Samoeng, Chiang Mai 50250 Thailand
Tel. / WhatsApp / Line: +66801256611
E-mail: apgoodattravel@gmail.com www.apgoodattravel.com



APF-03: One Day Doi Suthep Temple, Palad temple, Orchid farm and Long Neck hill tribe



We depart from your hotel to Doi Suthep - Pui National Park which takes about a 30-minute drive. First, we visit **Palad Temple**. While it is not a particularly beautiful temple building, it features magical temple grounds including a waterfall, forest paths and stunning views of the city. Then, we continue to visit **Wat Phra That Doi Suthep or Doi Suthep Temple**, one of northern Thailand's most important and beautiful temples, located near the top of Doi Suthep (Mount Suthep). Visitors can take the 306 steps staircase or ride on a cable car to reach the pagoda. **Enjoy the magnificence of the temple with its Golden Chedi glowing and spectacular views of Chiang Mai City and its surroundings. You will experience the signature dish of the northern food, "Khao Soi" for lunch.** After lunch, we visit **Orchid Farm**. Finally, we visit **Karen Long Neck hill tribe village**. Civilization and materialism change their lives from hill tribes who live with a peaceful life, behind the mountains, to people who live rush in the city. Some cultures are almost gone from the minds of the new generation.

SERVICE TYPE	PRICES PER PERSON IN THAI BAHT					
	1 PAX	2 PAX	3 PAX	4-5 PAX	6-7 PAX	8 PAX UP
Private Tour (6 - 7 hours)	6,000	3,350	2,800	2,500	2,200	2,000

TOUR INCLUDES : Roundtrip transfer from/to the hotel, transportation for tour (VIP air-con Car/Van), professional English speaking guide, admission fees, **lunch (Khao Soi)**, drinking water and travel accident insurance.

TOUR EXCLUDES : Other optional tour& meals than mentioned in the program, personal expenses.

Remark: Program may be subject to change due to available schedule and any other unforeseen reasons.



AP GOOD @ TRAVEL (LICENSE NO. 21/01124)
14/1 Moo 8, Samoeng Tai, Samoeng, Chiang Mai 50250 Thailand
Tel. / WhatsApp / Line: +66801256611
E-mail: apgoodattravel@gmail.com www.apgoodattravel.com



APF-04: One Day Doi Suthep Temple and Sticky Waterfall



We depart from your hotel to Doi Suthep - Pui National Park which takes about a 30-minute drive. First, we visit **Palad Temple or Wat Pha Lat** – while most people head to the top of Doi Suthep to visit the golden chedi of Wat Phra That Doi Suthep, many don't realize there's another gem hiding part way up the mountain. While it is not a particularly beautiful temple building, it features magical temple grounds including a waterfall, forest paths and stunning views of the city. Then, continue to visit **Wat Phra That Doi Suthep or Doi Suthep Temple**, one of northern Thailand's most important and beautiful temples, located near the top of Doi Suthep (Mount Suthep). It is an important pilgrimage spot for the devout and is sacred site to many Thai people. **Enjoy the magnificence of the temple with its Golden Chedi glowing and spectacular views of Chiang Mai City and its surroundings.** Lunch will be provided at a local restaurant. After lunch, we continue to Bua Thong Waterfall which is multi-tiered waterfall made of limestone deposits. This waterfall is as known as **"The Sticky Waterfall"**. The limestone is amazing. It actually sticks to your feet and allow you to walk up and down the waterfall with rushing water all around. **You will enjoy a climb up and down as like as Spider man. What an amazing experience!**

SERVICE TYPE	PRICES PER PERSON IN THAI BAHT					
	1 PAX	2 PAX	3 PAX	4-5 PAX	6-7 PAX	8 PAX UP
Private Tour (8-9 hours)	6,500	3,500	3,000	2,600	2,400	2,200

TOUR INCLUDES : Roundtrip transfer from/to the hotel, transportation for tour (VIP air-con Car/Van), professional English speaking guide, admission fees, lunch, drinking water and travel accident insurance.

TOUR EXCLUDES : Other optional tours & meals than mentioned in the program, personal expenses.

Remark: Program may be subject to change due to available schedule and any other unforeseen reasons.



AP GOOD @ TRAVEL (LICENSE NO. 21/01124)
14/1 Moo 8, Samoeng Tai, Samoeng, Chiang Mai 50250 Thailand
Tel. / WhatsApp / Line: +66801256611
E-mail: apgoodattravel@gmail.com www.apgoodattravel.com



APF-05: One Day Doi Suthep Temple ,Long Neck hill tribe & Sticky Waterfall



We depart from your hotel to Doi Suthep - Pui National Park which takes about a 40-minute drive. First, we visit **Wat Phra That Doi Suthep or Doi Suthep Temple**, one of northern Thailand's most important and beautiful temples, located near the top of Doi Suthep (Mount Suthep). It is an important pilgrimage spot for the devout and is sacred site to many Thai people. **Enjoy the magnificence of the temple with its Golden Chedi glowing and spectacular views of Chiang Mai City and its surroundings.** Then, continue to **Karen Long Neck hill tribe village**. Civilization and materialism change their lives from hill tribes who live with a peaceful life, behind the mountains, to people who live rush in the city. Some cultures are almost gone from the minds of the new generation. Lunch will be provided at a local restaurant. After lunch, we continue to Bua Thong Waterfall which is multi-tiered waterfall made of limestone deposits. This waterfall is as known as **"The Sticky Waterfall"**. The limestone is amazing. It actually sticks to your feet and allow you to walk up and down the waterfall with rushing water all around. **You will enjoy a climb up and down as like as Spider man. What an amazing experience!**

SERVICE TYPE	PRICES PER PERSON IN THAI BAHT					
	1 PAX	2 PAX	3 PAX	4-5 PAX	6-7 PAX	8 PAX UP
Private Tour (8-9 hours)	6,500	3,500	3,000	2,600	2,400	2,200

TOUR INCLUDES : Roundtrip transfer from/to the hotel, transportation for tour (VIP air-con Car/Van), professional English speaking guide, admission fees, lunch, drinking water and travel accident insurance.

TOUR EXCLUDES : Other optional tours & meals than mentioned in the program, personal expenses.

Remark: Program may be subject to change due to available schedule and any other unforeseen reasons.



AP GOOD @ TRAVEL (LICENSE NO. 21/01124)
14/1 Moo 8, Samoeng Tai, Samoeng, Chiang Mai 50250 Thailand
Tel. / WhatsApp / Line: +66801256611
E-mail: apgoodattravel@gmail.com www.apgoodattravel.com



APF-06: One Day Long-neck hill tribe and 2 different hill tribe Chiang Dao Cave and Temple



We depart from your hotel to Northern area through the beautiful countryside of Chiang Mai to Chiang Dao District. First, we visit Karen Long-neck hill tribe village, walk around village to see Long-neck lifestyles. Then, continue drive to **hill tribe original villages in the present day, namely Red Lahu and Palong hill tribe. We walk around these villages to learn how all these tribes have different lifestyles.** Lunch will be provided. After lunch, we drive to **Chiang Dao Cave, which is an ancient cave where natural light is reflected within the stone cave, and features many beautiful stalagmites.** After this, we continue to walk around **Chiang Dao temple** and take photos with the ruins. Finally, we visit **Maemalai Market** where the local people go shopping to by some fruit and snack.

SERVICE TYPE	PRICES PER PERSON IN THAI BAHT					
	1 PAX	2 PAX	3 PAX	4-5 PAX	6-7 PAX	8 PAX UP
Private Tour (8-9 hours)	7,000	3,750	3,200	2,800	2,400	2,200

TOUR INCLUDES : Roundtrip transfer from/to the hotel, transportation for tour (VIP air-con Car/Van), professional English speaking guide, admission fees, lunch, drinking water and travel accident insurance.

TOUR EXCLUDES : Other optional tours & meals than mentioned in the program, personal expenses.

Remark: Program may be subject to change due to available schedule and any other unforeseen reasons.



AP GOOD @ TRAVEL (LICENSE NO. 21/01124)
14/1 Moo 8, Samoeng Tai, Samoeng, Chiang Mai 50250 Thailand
Tel. / WhatsApp / Line: +66801256611
E-mail: apgoodattravel@gmail.com www.apgoodattravel.com



APF-07: One Day Chiang Rai (Short Trip)



We depart from your hotel at 07:30 a.m. to Chiang Rai Province which takes about a 3-3½-hour drive. First, we have a short break at **Mae Khachan Hot Spring**, surrounded by spectacular hills, and it is the shelter of the large and shady tree. Then, we continue to visit Rong Khun Temple, more well-known among foreigners as the **White Temple**, is a contemporary unconventional Buddhist temple in Chiang Rai Province, Thailand. It was designed by Chalermchai Kositpipat in 1997. After lunch at a local restaurant, we visit **Blue temple**. Finally, we visit **Black House** where is the proud work of Thawan Duchanee, a Chiang Rai born Thai artist who has developed a style of work representing the darkness in humanity. With lots of red and black hues, skins, skulls and various other animal parts made into eerie artwork.

Optional tour:

- Karen Long Neck hill tribe 500 Baht / person

SERVICE TYPE	PRICES PER PERSON IN THAI BAHT					
	1 PAX	2 PAX	3 PAX	4-5 PAX	6-7 PAX	8 PAX UP
Private Tour (10-11 hours)	7,500	4,000	3,400	3,000	2,650	2,400

TOUR INCLUDES : Roundtrip transfer from/to the hotel, transportation for tour (VIP air-con Car/Van), professional English speaking guide, admission fees, lunch, drinking water and travel accident insurance.

TOUR EXCLUDES : Other optional tours & meals than mentioned in the program, personal expenses.

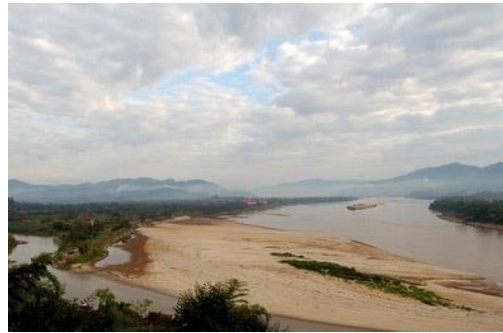
Remark: Program may be subject to change due to available schedule and any other unforeseen reasons.



AP GOOD @ TRAVEL (LICENSE NO. 21/01124)
14/1 Moo 8, Samoeng Tai, Samoeng, Chiang Mai 50250 Thailand
Tel. / WhatsApp / Line: +66801256611
E-mail: apgoodattravel@gmail.com www.apgoodattravel.com



APF-08: One Day Chiang Rai (Long Trip)



We depart from your hotel at 07:00 a.m. to Chiang Rai Province which takes about a 3-3½-hour drive. First, we have a short break at **Mae Khachan Hot Spring**, surrounded by spectacular hills, and it is the shelter of the large and shady tree. Then, we continue to Chiang Rai to visit **Rong Khun Temple**, more well-known among foreigners as the **White Temple**, is a contemporary unconventional Buddhist temple in Chiang Rai Province, Thailand. It was designed by Chalermchai Kositpipat in 1997. After that, visit **Blue temple**. Then, we drive to **Chiang Saen ancient city**. Chiang Saen is small district of Chiang Rai province and the Ancient City of Chiang Saen is one of the oldest settlements in the Kingdom of Thailand. After lunch, we visit **Opium house** which informs you of the history, cultivation and trade of the opium poppy which made the Golden Triangle so notorious. Finally, we visit **Golden Triangle** where you can enjoy the panoramic view of Thailand, Laos, and Myanmar on Pra That Pu Khao Temple.

Optional tour:

- Boat trip along Khong River 800 Baht / person
- Karen Long Neck hill tribe 500 Baht / person

SERVICE TYPE	PRICES PER PERSON IN THAI BAHT					
	1 PAX	2 PAX	3 PAX	4-5 PAX	6-7 PAX	8 PAX UP
Private Tour (13-14 hours)	8,500	4,500	3,800	3,200	2,850	2,550

TOUR INCLUDES : Roundtrip transfer from/to the hotel, transportation for tour (VIP air-con Car/Van), professional English speaking guide, admission fees, lunch, drinking water and travel accident insurance.

TOUR EXCLUDES : Other optional tours & meals than mentioned in the program, personal expenses.

Remark: Program may be subject to change due to available schedule and any other unforeseen reasons.



AP GOOD @ TRAVEL (LICENSE NO. 21/01124)
14/1 Moo 8, Samoeng Tai, Samoeng, Chiang Mai 50250 Thailand
Tel. / WhatsApp / Line: +66801256611
E-mail: apgoodattravel@gmail.com www.apgoodattravel.com



APF-09: One Day Doi Suthep Temple and Tea Plantation Tour



We depart from your hotel to Doi Suthep - Pui National Park which takes about a 30-minute drive. First, we visit **Palad Temple**. While it is not a particularly beautiful temple building, it features magical temple grounds including a waterfall, forest paths and stunning views of the city. Then, we continue to visit **Wat Phra That Doi Suthep or Doi Suthep Temple**, one of northern Thailand's most important and beautiful temples, located near the top of Doi Suthep (Mount Suthep). Visitors can take the 306 steps staircase or ride on a cable car to reach the pagoda. **Enjoy the magnificence of the temple with its Golden Chedi glowing and spectacular views of Chiang Mai City and its surroundings. You will experience the signature dish of the northern food, "Khao Soi" for lunch.** After lunch, we drive to **Araksa Tea plantation**. Start by entering the tea plantation which is absolutely beautiful and peaceful, you will be greeted by staff who will explain the different processes and methods used to cultivate young tea plants. After that, **you will get to pick your own tea leaves which is fun and relaxing and see them roasted. Then the best part - tea time! , served with delicious Thai snacks.**

SERVICE TYPE	PRICES PER PERSON IN THAI BAHT					
	1 PAX	2 PAX	3 PAX	4-5 PAX	6-7 PAX	8 PAX UP
Private Tour (8-9 hours)	7,000	3,800	3,300	3,000	2,650	2,500

TOUR INCLUDES : Roundtrip transfer from/to the hotel, transportation for tour (VIP air-con Car/ Van), professional English speaking guide, admission fees, lunch, drinking water and travel accident insurance.

TOUR EXCLUDES : Other optional tours & meals than mentioned in the program, personal expenses.

Remark:

- You will join activity with other people for Tea Plantation tour. We try and make our tour as fun and interactive as possible and encourage our guests to interact with each other. You'll have a chance to meet others while still being able to step away after the tour is over.**
- Program may be subject to change due to available schedule and any other unforeseen reasons.**



AP GOOD @ TRAVEL (LICENSE NO. 21/01124)
14/1 Moo 8, Samoeng Tai, Samoeng, Chiang Mai 50250 Thailand
Tel. / WhatsApp / Line: +66801256611
E-mail: apgoodattravel@gmail.com www.apgoodattravel.com



APF-10: One Day Doi Suthep Temple, Long Neck Hill tribe and Zipline



We depart from your hotel to Doi Suthep - Pui National Park which takes about a 30-minute drive. First, we visit **Wat Phra That Doi Suthep or Doi Suthep Temple**, one of northern Thailand's most important and beautiful temples, located near the top of Doi Suthep (Mount Suthep). **Enjoy the magnificence of the temple with its Golden Chedi glowing and spectacular views of Chiang Mai City and its surroundings.** Then, continue to **Karen Long Neck hill tribe village**. Civilization and materialism change their lives from hill tribes who live with a peaceful life, behind the mountains, to people who live rush in the city. Some cultures are almost gone from the minds of the new generation. Lunch will be provided at a local restaurant. After lunch, we continue to **Phoenix Adventure Park**. Here you will entertain yourself with **exciting activities with Zipline 24 Platforms** (14 Ziplines, 1 Lego Bridge, 1 Grass walk, 1 Window walk, 1 Miller belt, 5 Spiral staircase and Miniature train for round place).

SERVICE TYPE	PRICES PER PERSON IN THAI BAHT					
	1 PAX	2 PAX	3 PAX	4-5 PAX	6-7 PAX	8 PAX UP
Private Tour (8 hours)	7,500	4,250	3,700	3,300	3,150	3,000

TOUR INCLUDES : Roundtrip transfer from/to the hotel, transportation for tour (VIP air-con Car/Van), professional English speaking guide, admission fees, lunch, drinking water and travel accident insurance.

TOUR EXCLUDES : Other optional tours & meals than mentioned in the program, personal expenses.

Remark:

- Age between 6 - 65 years old, minimum height 120 cm and maximum weight 120 Kilograms (264 pounds) for Zipline program.
- Program may be subject to change due to available schedule and any other unforeseen reasons.



AP GOOD @ TRAVEL (LICENSE NO. 21/01124)
14/1 Moo 8, Samoeng Tai, Samoeng, Chiang Mai 50250 Thailand
Tel. / WhatsApp / Line: +66801256611
E-mail: apgoodattravel@gmail.com www.apgoodattravel.com



APF-12: One Day Thai Elephant Conservation Center and Lampang City



We start by departing from Chiang Mai at 08:30 a.m. to **Lampang province** which takes about a 1 hour drive. First, we visit **the Thai Elephant Conservation Center (TECC)**. The TECC was founded in 1993 under Royal Patronage. This establishment cares for more than 50 Asian elephants in a beautiful forest. Beyond being an exciting tourist experience, the TECC is also known for its pioneering work in conservation and science. Here you will **visit baby Elephant and feed the elephant**. Then, continue to **Friends of the Asian elephant which is the World's First Elephant Hospital** where looking after the welfare of elephants throughout Thailand – a service that is desperately needed. Lunch will be provided at a local restaurant. After lunch, we **explore Lampang city by Horse carriage**. Then, we continue to visit **Prathat Lampang Luang Temple** which is a beautiful Lanna Architecture temple. On the way back, we stop at **Mae Tha flea market** to see the jungle food and local snack such as deep fried insects, worm, Etc.

SERVICE TYPE	PRICES PER PERSON IN THAI BAHT					
	1 PAX	2 PAX	3 PAX	4-5 PAX	6-7 PAX	8 PAX UP
Private Tour (8-9 hours)	7,000	3,750	3,200	2,800	2,400	2,200

TOUR INCLUDES : Roundtrip transfer from/to the hotel, transportation for tour (VIP air-con Car/Van), professional English speaking guide, admission fees, lunch, drinking water and travel accident insurance.

TOUR EXCLUDES : Other optional tours & meals than mentioned in the program, personal expenses.

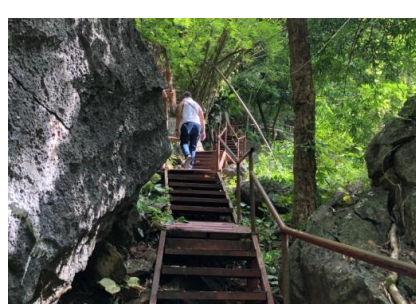
Remark: Program may be subject to change due to available schedule and any other unforeseen reasons.



AP GOOD @ TRAVEL (LICENSE NO. 21/01124)
14/1 Moo 8, Samoeng Tai, Samoeng, Chiang Mai 50250 Thailand
Tel. / WhatsApp / Line: +66801256611
E-mail: apgoodattravel@gmail.com www.apgoodattravel.com



APF-13: One Day Unseen in Lampang !



We start by departing from Chiang Mai to Lampang Province which takes about an hour and fifteen minutes. First, we stop at **Tung Kwian Market**, one of the authentic markets, where you will find mix of local products from clay to fresh vegetables and fruits from local farms to some unusual food stuff to variety of local northern food such as pork rinds, sausages. Then, we drive about 1½ hours to visit **Wat Chalermprakiat Phrachomklao Rachanuson. Also name Wat Phrabat Pu Pha Daeng at ground-base level of Pu Yak Mountain.** The temple was built to commemorate King Rama IV of Rattanakosin dynasty's 200th anniversary. The view is absolutely stunning and breathtaking going up to reach pagodas perched on top of Pu Yak Mountain. **A road trail and a series of steel steps (about 300 steps) created to facilitate the climb.** The mountain has been a Buddhist pilgrimage site, due to a feature believed to be a footprint of Buddha. **A truly incredible place to visit!** After lunch at a local restaurant, we continue to visit **Chae Son National Park**, a lush forested and mountainous region. The main attraction is **Chae Son Waterfall** which is the 6-level waterfall with clear water flowing through high mountains. Only one kilometer away is the **hot spring** providing a misty and picturesque scene. **A perfect program for Nature Lovers!**

SERVICE TYPE	PRICES PER PERSON IN THAI BAHT					
	1 PAX	2 PAX	3 PAX	4-5 PAX	6-7 PAX	8 PAX UP
Private Tour (10-11 hours)	8,000	4,500	4,000	3,500	3,000	2,850

TOUR INCLUDES : Roundtrip transfer from/to the hotel, transportation for tour (VIP air-con Car/Van), professional English speaking guide, admission fees, lunch, drinking water and travel accident insurance.

TOUR EXCLUDES : Other optional tour& meals than mentioned in the program, personal expenses.

Remark:

1. This tour program requires a moderate level of physical. Make sure you're in good health and can withstand a moderate level of activity. You may experience symptoms of motion sickness due to the windy road.
2. Pregnancy is not allowed to do this program.
3. Program may be subject to change due to available schedule and any other unforeseen reasons.



AP GOOD @ TRAVEL (LICENSE NO. 21/01124)
14/1 Moo 8, Samoeng Tai, Samoeng, Chiang Mai 50250 Thailand
Tel. / WhatsApp / Line: +66801256611
E-mail: apgoodattravel@gmail.com www.apgoodattravel.com



APF-14: One Day Sukhothai Historical City



We depart from Chiang Mai early in the morning to **Sukhothai Province**; located about 300 kilometers from Chiang Mai. First, we will visit **Srisatchanalai Historical Park**, an ancient town formerly known as Mueng Chaliang, and was renamed as Satchanalai during the reign of Phra Ruang when a new administrative center was established to replace Chaliang ruins. A total of 134 monuments have been discovered within the park. Start the historical tour with **Phra Si Rattana Mahathat Temple, Chang Lom Temple, Chedi Jet Thaew Temple and Nang Phaya Temple**. Lunch will be provided at a local restaurant. After lunch, continue to visit **Sukhothai Historical Park**; the first truly independent Thai Kingdom. Historical artifacts have proved that Thai culture - especially the Thai alphabets and language are originated from Sukhothai. Here you may explore ruins of the royal palaces, Buddhist temples, the city gates, walls, moats, dams, ditches, ponds, canals and the water dyke control system which was the magical and spiritual center of the Kingdom are now preserved and restored by the Fine Arts Department with the cooperation of UNESCO, not only with a view of fostering Thailand's national identity but of safeguarding in fine example of mankind's cultural heritage. We start the historical tour with **King Ramkhamhaeng Monument, Mahathat Temple, Si-Sa Wai Temple, Traphang-Ngoen Temple, Sa-Sri Temple, Sorasak Temple, Sri Chum Temple and Phra-Phai-Luang Temple**. Finally, we return back to Chiang Mai late in the evening or drop you off at your hotel in Sukhothai or at Sukhothai Airport.

SERVICE TYPE	PRICES PER PERSON IN THAI BAHT					
	1 PAX	2 PAX	3 PAX	4-5 PAX	6-7 PAX	8 PAX UP
Private Tour (14 hours)	9,000	5,000	4,000	3,500	3,000	2,850

TOUR INCLUDES : Roundtrip transfer from/to the hotel, transportation for tour (VIP air-con Car/Van), professional English speaking guide, admission fees, lunch, drinking water and travel accident insurance.

TOUR EXCLUDES : Other optional tour & meals than mentioned in the program, personal expenses.

Remark: Program may be subject to change due to available schedule and any other unforeseen reasons.



AP GOOD @ TRAVEL (LICENSE NO. 21/01124)
14/1 Moo 8, Samoeng Tai, Samoeng, Chiang Mai 50250 Thailand
Tel. / WhatsApp / Line: +66801256611
E-mail: apgoodattravel@gmail.com www.apgoodattravel.com



APF-15: One Day Longneck hill tribe & 10 KM. Whitewater Rafting



We depart from your hotel at 08:30 a.m. to Karen Long Neck hill tribe village. Civilization and materialism change their lives from hill tribes who live with a peaceful life, behind the mountains, to people who live rush in the city. Some cultures are almost gone from the minds of the new generation and no one knows when it will be forgotten. Lunch will be provided beside the river with a fresh air and beautiful scenery. **Northern Thailand is the perfect location for exciting whitewater.** With its warm, tropical weather, steep mountains, and beautiful scenery, the Mae Taeng is the nexus of fun in northern Thailand. A full safety talk is standard on all trips and is given by English speaking staff. A detailed understanding of the trip, its schedule, safety, and routine is instilled into each guest before any trip commences in order to better serve you. Each trip is supervised by experienced guides and dedicated safety personnel, ensuring that **our international standards of safety are upheld.** Experience an unforgettable Whitewater Rafting among the beauty of the rainforest and remote areas of Northern Thailand as we follow the rivers through wild jungle and gorgeous scenery. **We would recommend this adventure to anyone and wanting to see the beautiful countryside.**

SERVICE TYPE	PRICES PER PERSON IN THAI BAHT					
	1 PAX	2 PAX	3 PAX	4-5 PAX	6-7 PAX	8 PAX UP
Private Tour (8-9 hours)	7,500	4,250	3,700	3,300	3,150	3,000

TOUR INCLUDES : Roundtrip transfer from/to the hotel, transportation for tour (VIP air-con Car/Van), professional English speaking guide, admission fees, drinking water and travel accident insurance.

TOUR EXCLUDES : Other optional tours & meals than mentioned in the program, personal expenses.

Remark:

- Children between the ages of 7 and 12 are welcome to accompany their parents on the raft, but we ask that they skip the 2km stretch of class IV rapids as they can be too dangerous for small children.
- What to wear / What to bring: Swimming suit, Athletic Shoes, towel, change of your cloth and waterproof bags for phones/cameras, etc.
- Program may be subject to change due to available schedule and any other unforeseen reasons.



AP GOOD @ TRAVEL (LICENSE NO. 21/01124)
14/1 Moo 8, Samoeng Tai, Samoeng, Chiang Mai 50250 Thailand
Tel. / WhatsApp / Line: +66801256611
E-mail: apgoodattravel@gmail.com www.apgoodattravel.com



APF-16: One Day Thai Boxing Class and Sticky Waterfall



We depart from your hotel at 08:30 a.m. or 09:00 a.m. to Buakaw Village (Banchamek Gym) which takes about a 1 hour 30 minutes drive. **Buakaw village was established by Buakaw Banchamek, one of the most famous Muay Thai Fighters** where located in Mae Taeng, Chiang Mai. **Here you will learn basic of Thai Boxing class 90 minutes for adult and 60 minutes for children beside the nature area.** Lunch will be provided at Buakaw Village . After lunch, we continue to Bua Thong Waterfall which is multi-tiered waterfall made of limestone deposits. This waterfall is as known as **“The Sticky Waterfall”**. The limestone is amazing. It actually sticks to your feet and allow you to walk up and down the waterfall with rushing water all around. **You will enjoy a climb up and down as like as Spider man. What an amazing experience!**

SERVICE TYPE	PRICES PER PERSON IN THAI BAHT					
	1 PAX	2 PAX	3 PAX	4-5 PAX	6-7 PAX	8 PAX UP
Private Tour (8-8 ½ hours)	7,500	4,750	4,200	3,850	3,600	3,500

TOUR INCLUDES : Roundtrip transfer from/to the hotel, transportation for tour (VIP air-con Car/Van), professional English speaking guide, admission fees, **Boxing Hand Wraps and Gloves for Training, lunch, drinking water and travel accident insurance.**

TOUR EXCLUDES : Other optional tours & meals than mentioned in the program, personal expenses.

Remark:

- What to wear / What to bring: Training cloths, Tanning Shoes, Swimming suit, towel, change of your cloth and waterproof bags for phones/cameras, etc.**
- Program may be subject to change due to available schedule and any other unforeseen reasons.**



AP GOOD @ TRAVEL (LICENSE NO. 21/01124)
14/1 Moo 8, Samoeng Tai, Samoeng, Chiang Mai 50250 Thailand
Tel. / WhatsApp / Line: +66801256611
E-mail: apgoodattravel@gmail.com www.apgoodattravel.com



APF-17: One Day Chiang Mai Home Host and Doi Suthep Temple



We depart from your hotel to Hang Dong District at 09:30 . The home you will be visiting belongs to the Raunkaew-Yanon family almost 150 years ago. Just real home cooking in a real Thai neighborhood. Discover the architecture of traditional Thai Lanna house and rice barn. Your Thai family will also demonstrate their basket to garden, family orchid with many types of fruit such as banana, mango, coconut and select fresh ingredients to add to the days cooking extravaganza. You will learn to cook traditional home cooked recipes with authentic Northern Thai flavors that are different from standard dishes offer in commercial cooking classes. Best of all you will have the opportunity to get to know a real Thai family and be their house guest for the day. Enjoy a delicious home cooked lunch with your family. After lunch, we drive to visit **Wat Phra That Doi Suthep or Doi Suthep Temple**, one of northern Thailand's most important and beautiful temples, located near the top of Doi Suthep (Mount Suthep). Enjoy the magnificence of the temple with its Golden Chedi glowing and spectacular views of Chiang Mai City and its surroundings. **What an amazing experience!**

SERVICE TYPE	PRICES PER PERSON IN THAI BAHT					
	1 PAX	2 PAX	3 PAX	4-5 PAX	6-7 PAX	8 PAX UP
Private Tour (7-8 hours)	8,000	4,500	4,000	3,500	3,000	2,850

TOUR INCLUDES : Roundtrip transfer from/to the hotel, transportation for tour (VIP air-con Car/ Van), professional English speaking guide, admission fees, **Thai Cooking Class with Lunch**, drinking water and travel accident insurance.

TOUR EXCLUDES : Other optional tours & meals than mentioned in the program, personal expenses.

Remark: Remark: Program may be subject to change due to available schedule and any other unforeseen reasons.



AP GOOD @ TRAVEL (LICENSE NO. 21/01124)
14/1 Moo 8, Samoeng Tai, Samoeng, Chiang Mai 50250 Thailand
Tel. / WhatsApp / Line: +66801256611
E-mail: apgoodattravel@gmail.com www.apgoodattravel.com



TREKKING TOUR

TOUR INCLUDES :

Round trip transfer from/to the hotel, transportation for tour (VIP air-con Car/ Van), professional English speaking guide, admission fees, lunch, drinking water and travel accident insurance.

A special meal can be requested at the time of booking or by adding a request to an existing reservation. We will do our best to supply your preferred choice.

TOUR EXCLUDES:

Other optional tours & meals than mentioned in the program, personal expenses.

Dress code:-Free style, Hiking shoes, Jacket needed for winter season

Note

1. This tour program requires a moderate level of physical. Make sure you're in good health and can withstand a moderate level of activity.
2. Pregnancy is not allowed to do this program.
3. Lunch is inclusive for full day tour only.
4. Prices are quoted in Thai Baht.
5. Rates are subject to change without prior notice.
6. Children price:

- Children under 2 years old	Free
- Children 2- 6 years old	Charge 50 % from Adult Price
- Children 7-9 years old	Charge 80 % from Adult Price
- Children from 10 years and above	Charge Adult Price



AP GOOD @ TRAVEL (LICENSE NO. 21/01124)
14/1 Moo 8, Samoeng Tai, Samoeng, Chiang Mai 50250 Thailand
Tel. / WhatsApp / Line: +66801256611
E-mail: apgoodattravel@gmail.com www.apgoodattravel.com



APT-01: Half Day Doi Suthep Temple and short trekking on monk trail



We depart from your hotel to Doi Suthep - Pui National Park which takes about a 45-minute drive. First, we visit **Wat Phra That Doi Suthep or Doi Suthep Temple**, one of northern Thailand's most important and beautiful temples, located near the top of Doi Suthep (Mount Suthep). It is a place of worship, dates back to the year 1373 when the first Chedi was built. It is an important pilgrimage spot for the devout and is sacred site to many Thai people. Visitors can take the 306 steps staircase or ride on a cable car to reach the pagoda. **Enjoy the magnificence of the temple with its Golden Chedi glowing and spectacular views of Chiang Mai City and its surroundings. A must visit!** Then, continue to visit **Palad Temple or Wat PhaLat** – while most people head to the top of Doi Suthep to visit the golden chedi of Wat Phra That DoiSuthep, many don't realize there's another gem hiding part way up the mountain. While it is not a particularly beautiful temple building, it features magical temple grounds including a waterfall, forest paths and stunning views of the city. Finally, we start **trekking down from Palad Temple to base of Doi Suthep - Pui National park on Monk trail about 1.5 kilometers or about 30-45 minutes.**

(If you want to do hiking uphill, please inform us in advance).

SERVICE TYPE	PRICES PER PERSON IN THAI BAHT					
	1 PAX	2 PAX	3 PAX	4-5 PAX	6-7 PAX	8 PAX UP
Private Tour (4 ½ -5 hours)	4,000	2,200	1,850	1,600	1,450	1,300

TOUR INCLUDES : Roundtrip transfer from/to the hotel, transportation for tour (VIP air-con Car/ Van), professional English speaking guide, admission fees, drinking water and travel accident insurance.

TOUR EXCLUDES : Other optional tours & meals than mentioned in the program, personal expenses.

Remark:

1. Minimum age is 5 years old (Easy Level).
2. Pregnancy is not allowed to do this program
3. Program may be subject to change due to available schedule and any other unforeseen reasons.



AP GOOD @ TRAVEL (LICENSE NO. 21/01124)
14/1 Moo 8, Samoeng Tai, Samoeng, Chiang Mai 50250 Thailand
Tel. / WhatsApp / Line: +66801256611
E-mail: apgoodattravel@gmail.com www.apgoodattravel.com



APT-02: Half Day Trekking Doi Suthep – Pui National Park area



We depart from your hotel in Chiang Mai which takes about a 45-minute drive to Forestry Camp at **Doi Suthep - Pui National Park** which is a mountain, situated 16 kilometers from Chiang Mai City, with a summit that is 1,053 meters above sea level. First, we visit **Wat Phra That Doi Suthep or Doi Suthep Temple**, one of northern Thailand's most important and beautiful temples, located near the top of Doi Suthep (Mount Suthep). Enjoy the magnificence of the temple with its Golden Chedi glowing and spectacular views of Chiang Mai City and its surroundings. Then, we continue to Doi Suthep – Pui National Park Office. Trekking in Northern Thailand is a memorable experience allowing you to discover unique aspects to Thailand. You will have a great time enjoying nature. The park is ideal for hiking through many trail options. We start **hiking downhill passing lush green forest to Mon Tha Than Waterfall**, a nine-tiered waterfall, for about 2-2 ½ hours (4.5 kilometers). You will learn about trees and native wildlife in their natural environment in that area.

(If you want to do hiking uphill, please inform us in advance).

SERVICE TYPE	PRICES PER PERSON IN THAI BAHT					
	1 PAX	2 PAX	3 PAX	4-5 PAX	6-7 PAX	8 PAX UP
Private Tour (5 - 5 ½ hours)	5,200	2,750	2,300	2,000	1,850	1,750

TOUR INCLUDES : Roundtrip transfer from/to the hotel, transportation for tour (VIP air-con Car/Van), professional English speaking guide, admission fees, drinking water and travel accident insurance.

TOUR EXCLUDES : Other optional tours & meals than mentioned in the program, personal expenses.

Remark:

1. Recommended for people aged from 10-60 years old with hiking experience (Intermediate level).
2. This tour program requires a moderate level of physical. Make sure you're in good health and can withstand a moderate level of activity. Pregnancy is not allowed to do this program.
3. This tour program is available in October - March.
4. Program may be subject to change without notice due to available schedule and any other unforeseen reasons.



AP GOOD @ TRAVEL (LICENSE NO. 21/01124)
14/1 Moo 8, Samoeng Tai, Samoeng, Chiang Mai 50250 Thailand
Tel. / WhatsApp / Line: +66801256611
E-mail: apgoodattravel@gmail.com www.apgoodattravel.com



APT-03: One Day Doi Inthanon National Park and Trekking on Pha Dok Siew Nature Trail



We depart from your hotel to Southern area which takes about a 2 hours drive. **Doi Inthanon National Park is Thailand's highest mountain** which is a true jewel of natural beauty, consisting of rugged mountainous terrain blanketed by lush tropical forests and majestic waterfalls. First, we stop at the highest peak to see incredible panoramic views. Then, travel to **Angkha Nature Trail** to discover Rhododendrons and forest which can only be seen at this high elevation. After that, we visit **twin pagodas** which were built by the Royal Thai Air Force in commemoration of the 60th birthday of Majesties The King and Queen. Next, we stop at **Hmong hill tribe Market**. Lunch will be provided at a local restaurant. After lunch, we start a **1 ½ - 2 hour trek on Pha Dok Siew Nature Trail**, this trail will take you through rice fields and beautiful mountainous scenery to hill tribe village where you can sample the mountain coffee and learn about the culture. If you visit Chiang Mai in October and November, you will see amazing views of Terraced Rice Fields. Finally, we drive to **Wachirathan Waterfall**, one of Inthanon's most beautiful waterfalls.

SERVICE TYPE	PRICES PER PERSON IN THAI BAHT					
	1 PAX	2 PAX	3 PAX	4-5 PAX	6-7 PAX	8 PAX UP
Private Tour (9-10 hours)	7,500	4,000	3,400	3,000	2,650	2,400

TOUR INCLUDES : Roundtrip transfer from/to the hotel, transportation for tour (VIP air-con Car/Van), professional English speaking guide, admission fees, lunch, drinking water and travel accident insurance.

TOUR EXCLUDES : Other optional tours & meals than mentioned in the program, personal expenses.

Remark:

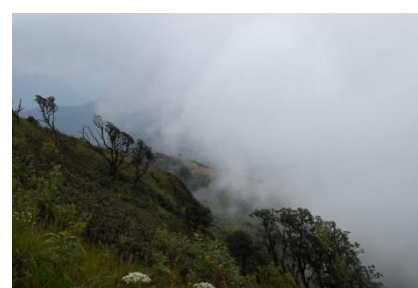
1. This tour program requires a moderate level of physical. Make sure you're in good health and can withstand a moderate level of activity (Intermediate level).
2. Pregnancy is not allowed to do this program.
3. Program may be subject to change without notice due to available schedule and any other unforeseen reasons.



AP GOOD @ TRAVEL (LICENSE NO. 21/01124)
14/1 Moo 8, Samoeng Tai, Samoeng, Chiang Mai 50250 Thailand
Tel. / WhatsApp / Line: +66801256611
E-mail: apgoodattravel@gmail.com www.apgoodattravel.com



APT-04: One Day Doi Inthanon National Park and Trekking on Kew Mae Pan Nature Trail



We depart from your hotel to Southern area which takes about a 2 hours drive. **Doi Inthanon National Park is Thailand's highest mountain** which is a true jewel of natural beauty, consisting of rugged mountainous terrain blanketed by lush tropical forests and majestic waterfalls. First, we visit the highest peak to see incredible panoramic views. **to the highest peak to see incredible panoramic views.** Then, we start a **2-hour trek (about 3.2 kilometers) on Kew Mae Pan Nature Trail**, this trail take you through the nature of the evergreen forest over the top of the highest peak of Thailand, see wildlife and rare plants on the walk way. Overlook the panoramic view from the open area where you can see mountains curtain all around. After that, we visit **twin pagodas** which were built by the Royal Thai Air Force in commemoration of the 60th birthday of Majesties The King and Queen. Next, we stop at **Hmong hill tribe Market**. Lunch will be provided at a local restaurant. After lunch, we continue to **Karen hill tribe village** where you can sample the mountain coffee and learn about the culture. **If you visit Chiang Mai in August - November, you will see amazing views of Terraced Rice Fields.** Finally, we drive to **Wachirathan Waterfall**, one of Inthanon's most beautiful waterfalls.

SERVICE TYPE	PRICES PER PERSON IN THAI BAHT					
	1 PAX	2 PAX	3 PAX	4-5 PAX	6-7 PAX	8 PAX UP
Private Tour (9-10 hours)	7,500	4,000	3,400	3,000	2,650	2,400

TOUR INCLUDES : Roundtrip transfer from/to the hotel, transportation for tour (VIP air-con Car/Van), professional English speaking guide, admission fees, lunch, drinking water and travel accident insurance.

TOUR EXCLUDES : Other optional tours & meals than mentioned in the program, personal expenses.

Remark:

1. This tour program requires a moderate level of physical. Make sure you're in good health and can withstand a moderate level of activity (Intermediate level).
2. Pregnancy is not allowed to do this program.
3. This tour program is available in November- May.
4. Program may be subject to change without notice due to available schedule and any other unforeseen reasons.



AP GOOD @ TRAVEL (LICENSE NO. 21/01124)
14/1 Moo 8, Samoeng Tai, Samoeng, Chiang Mai 50250 Thailand
Tel. / WhatsApp / Line: +66801256611
E-mail: apgoodattravel@gmail.com www.apgoodattravel.com



APT-05: One Day Trekking Doi Suthep - Pui National Park (Doi Suthep Temple, White Hmong hill tribe, Waterfall)



We depart from your hotel which takes about 45 minutes to Doi Suthep which is a mountain situated 16 km. from Chiang Mai with a summit that is 1,053 meters above sea level. **Wat Phra That Doi Suthep or Doi Suthep Temple**, one of northern Thailand's most important and beautiful temples, located near the top of Doi Suthep (Mount Suthep). Enjoy the magnificence of the temple with its Golden Chedi glowing and spectacular views of Chiang Mai City and its surroundings. Then, we continue to Hmong Hill tribe village traveling by Songtaew, a local truck. **Drive along rough dirt roads to a village inhabited by the White Hmong hill tribe.** Spend time exploring the village, meeting the inhabitants and learning about the traditions and customs of this unique ethnic group. **Lunch will be provided at the hill tribe Village.** After lunch, we start **hiking downhill passing lush green forest to Mon Tha Than Waterfall, a nine-tiered waterfall, for about 3 hours.** You will learn about trees and native wildlife in their natural environment in that area. **A must do in Chiang Mai!**

SERVICE TYPE	PRICES PER PERSON IN THAI BAHT					
	1 PAX	2 PAX	3 PAX	4-5 PAX	6-7 PAX	8 PAX UP
Private Tour (8-9 hours)	7,500	4,000	3,400	3,000	2,650	2,400

TOUR INCLUDES : Roundtrip transfer from/to the hotel, transportation for tour (VIP air-con Car/Van), professional English speaking guide, admission fees, drinking water and travel accident insurance.

TOUR EXCLUDES : Other optional tours & meals than mentioned in the program, personal expenses.

Remark:

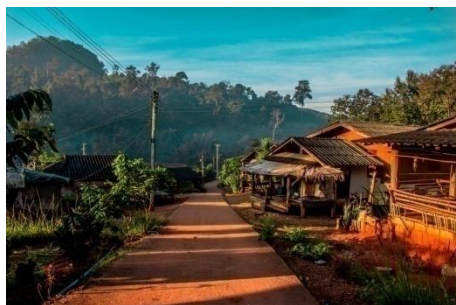
1. Recommended for people aged from 10-60 years old with hiking experience(Intermediate level).
2. This tour program requires a moderate level of physical. Make sure you're in good health and can withstand a moderate level of activity.
3. Pregnancy is not allowed to do this program.



AP GOOD @ TRAVEL (LICENSE NO. 21/01124)
14/1 Moo 8, Samoeng Tai, Samoeng, Chiang Mai 50250 Thailand
Tel. / WhatsApp / Line: +66801256611
E-mail: apgoodattravel@gmail.com www.apgoodattravel.com



APT-06: One Day Chiang Dao Hill tribe and Trekking



We depart from your hotel to Northern area through the beautiful countryside of Chiang Mai to Chiang Dao District which takes about 1 hour 45 minutes – 2 hours. Visit a **different hill tribe original villages in the present day, namely Lahu and Palong**. We walk around these villages to learn how all these tribes have different lifestyles. Then, we drive to Mae Mae Village. Mae Mae Village is a typical Northern Thai Village. This village is part of Chiang Dao National Park area which it surrounded by pristine and plentiful forest. Lunch will be provided at the village. We will **start trekking here for about 2 ½ - 3 hours with the local community guide through the village, forest and waterfall where you can swim and relax. Enjoy the beautiful both side of the walkway.**

SERVICE TYPE	PRICES PER PERSON IN THAI BAHT					
	1 PAX	2 PAX	3 PAX	4-5 PAX	6-7 PAX	8 PAX UP
Private Tour (9-10 hours)	7,500	4,000	3,400	3,000	2,650	2,400

TOUR INCLUDES : Roundtrip transfer from/to the hotel, transportation for tour (VIP air-con Car/Van), professional English speaking guide, admission fees, lunch, drinking water and travel accident insurance.

TOUR EXCLUDES : Other optional tour& meals than mentioned in the program, personal expenses.

Remark:

1. Recommended for people aged from 10-60 years old with hiking experience(Intermediate level).
2. This tour program requires a moderate level of physical. Make sure you're in good health and can withstand a moderate level of activity.
3. Pregnancy is not allowed to do this program.
4. Program may be subject to change without notice due to available schedule and any other unforeseen reasons.



AP GOOD @ TRAVEL (LICENSE NO. 21/01124)
14/1 Moo 8, Samoeng Tai, Samoeng, Chiang Mai 50250 Thailand
Tel. / WhatsApp / Line: +66801256611
E-mail: apgoodattravel@gmail.com www.apgoodattravel.com



APT-07: One day Hill Tribe trekking and Bamboo Rafting



The day starts with being picked up from your hotel at 07:30 a.m., follows by a scenic drive through the mountains. Enjoy the beauty of the rainforest and remote areas of Northern Thailand. On route we will stop by at **the local market** where we will buy some food and supplies for the trip into the hills. Next, we drive to the **rural hill tribe villages “Lahu Hill tribe”**. Here where you will learn about different way of life and culture. Then, we start the **hill trekking** for a couple of hours. Trekking in Northern Thailand is a memorable experience allowing you to discover unique aspects to Thailand. You will have a great time enjoying nature and learn about trees and native wildlife in their natural environment in that area. After lunch, it's time to go back , via a **bamboo raft** down Mae Taeng River through wild jungle and gorgeous scenery. At the end of rafting adventure, we change our clothes before heading back to your hotel. If you visit Chiang Mai in August - November, you will see amazing views of rice fields. **A must do in Chiang Mai!**

SERVICE TYPE	PRICES PER PERSON IN THAI BAHT					
	1 PAX	2 PAX	3 PAX	4-5 PAX	6-7 PAX	8 PAX UP
Private Tour (10-11 hours)	8,000	4,500	3,650	3,200	2,800	2,650

TOUR INCLUDES : Roundtrip transfer from/to the hotel, transportation for tour (VIP air-con Car/Van), professional English speaking guide, admission fees, lunch, drinking water and travel accident insurance.

TOUR EXCLUDES : Other optional tour& meals than mentioned in the program, personal expenses.

Remark:

1. Recommended for people aged from 12-60 years old with hiking experience (Intermediate level).
2. This tour program requires a moderate level of physical. Make sure you're in good health and can withstand a moderate level of activity.
3. Pregnancy is not allowed to do this program.
4. Program may be subject to change without notice due to available schedule and any other unforeseen reasons.



AP GOOD @ TRAVEL (LICENSE NO. 21/01124)
14/1 Moo 8, Samoeng Tai, Samoeng, Chiang Mai 50250 Thailand
Tel. / WhatsApp / Line: +66801256611
E-mail: apgoodattravel@gmail.com www.apgoodattravel.com



APT-08: One Day Trekking in Mae Wang



We depart from your hotel to southern area of Chiang Mai which takes about 1 hour. We will make our first stop at **the local market** where we buy food and supplies for the trip. Then, drive to Mae Wang district, part of Mae Wang National Park. **Here we will start trekking for about 2 hours from Karen hill tribe village over wooded mountains through forest, across rice fields to the waterfalls where you can swim and relax.** After lunch, we get picked up and drive to raft camp and **bamboo rafting** in the sense of fresh air and sustainable living along Mae Wang River. **What an amazing experience!**

SERVICE TYPE	PRICES PER PERSON IN THAI BAHT					
	1 PAX	2 PAX	3 PAX	4-5 PAX	6-7 PAX	8 PAX UP
Private Tour (9-10 hours)	7,500	4,000	3,400	3,000	2,650	2,400

TOUR INCLUDES : Roundtrip transfer from/to the hotel, transportation for tour (VIP air-con Car/Van), professional English speaking guide, admission fees, lunch, drinking water and travel accident insurance.

TOUR EXCLUDES : Other optional tours & meals than mentioned in the program, personal expenses.

Remark:

1. Recommended for people aged from 10-60 years old with hiking experience (Intermediate level).
2. This tour program requires a moderate level of physical. Make sure you're in good health and can withstand a moderate level of activity.
3. Pregnancy is not allowed to do this program.



AP GOOD @ TRAVEL (LICENSE NO. 21/01124)
14/1 Moo 8, Samoeng Tai, Samoeng, Chiang Mai 50250 Thailand
Tel. / WhatsApp / Line: +66801256611
E-mail: apgoodattravel@gmail.com www.apgoodattravel.com



Elephant Experience (No Riding)

TOUR INCLUDES :

Round trip transfer from/to the hotel, transportation for tour (VIP air-con Car/ Van), professional English speaking guide, admission fees, lunch, drinking water and travel accident insurance.

A special meal can be requested at the time of booking or by adding a request to an existing reservation. We will do our best to supply your preferred choice.

TOUR EXCLUDES:

Other optional tours & meals than mentioned in the program, personal expenses.

WHAT TO BRING:

T-Shirt & Short pants, Swimming Suit, Change of clothes, Training Shoes & flip-flops, Towel, Sunscreen and Insect Spray

Note

1. Lunch is inclusive for full day tour only.
2. Prices are quoted in Thai Baht.
3. Rates are subject to change without prior notice.
4. **Children price for half day Elephant Eco Valley Sanctuary:**
 - Children under 4 years Free
 - Children 4-10 years old Charge 50 % from Adult Price
 - Children from 10 years and above Charge Adult Price
5. Free for children under 2 years old and children 2-9 years old will charge 80% of adult price for half day Kanta Elephant Sanctuary.



AP GOOD @ TRAVEL (LICENSE NO. 21/01124)
14/1 Moo 8, Samoeng Tai, Samoeng, Chiang Mai 50250 Thailand
Tel. / WhatsApp / Line: +66801256611
E-mail: apgoodattravel@gmail.com www.apgoodattravel.com





APE-01: Half Day Elephant Experience



We depart from your hotel at 08:00 a.m. (morning) and 12:00 p.m. (afternoon) to **Elephant Eco Valley Sanctuary** which takes about 1 hour and 15 minutes. You will be taking part of elephant care and their everyday needs which includes feeding, bathing and walking with them for exercise. **It is an amazing experience in which you get to see and feel them.** Finally, we say goodbye to them and change your clothes before heading back to your hotel. **What an amazing experience!**

Kanta Elephant Sanctuary will pick up at 01:00 p.m. (afternoon).
Children 2-9 years old will charge 80% of adult price.

SERVICE TYPE	PRICES PER PERSON IN THAI BAHT					
	1 PAX	2 PAX	3 PAX	4-5 PAX	6-7 PAX	8 PAX UP
Private Tour (4½-5 hours)	5,500	3,250	3,000	2,700	2,500	2,400

TOUR INCLUDES : Roundtrip transfer from/to the hotel, transportation for tour (VIP air-con Car/Van), professional English speaking guide, admission fees, drinking water and travel accident insurance.

TOUR EXCLUDES : Other optional tours & meals than mentioned in the program, personal expenses.

Remark:

- You will join activity with other people for Elephant program. We try and make our tour as fun and interactive as possible and encourage our guests to interact with each other. You'll have a chance to meet others while still being able to step away after the tour is over.**
- Program may be subject to change due to available schedule and any other unforeseen reasons.**



AP GOOD @ TRAVEL (LICENSE NO. 21/01124)
14/1 Moo 8, Samoeng Tai, Samoeng, Chiang Mai 50250 Thailand
Tel. / WhatsApp / Line: +66801256611
E-mail: apgoodattravel@gmail.com www.apgoodattravel.com



APE-02: One Day Elephant Experience and Doi Suthep Temple



We depart from your hotel at 08:30 a.m. to Doi Suthep - Pui National Park which takes about a 30-minute drive. First, we visit **Palad Temple or Wat Pha Lat** which it is a particularly beautiful temple building. It features magical temple grounds including a waterfall, forest paths and stunning views of the city. Then, continue to visit **Wat Phra That Doi Suthep or Doi Suthep Temple**, one of northern Thailand's most important and beautiful temples. It is an important pilgrimage spot for the devout and is sacred site to many Thai people. **Enjoy the magnificence of the temple with its Golden Chedi glowing and spectacular views of Chiang Mai City and its surroundings. You will experience the signature dish of the northern food, "Khao Soi" for lunch.** After lunch, we drive to the local elephant park. You will be taking part of elephant care and their everyday needs which includes feeding, bathing and walking with them for exercise. **It is an amazing experience in which you get to see and feel them.** Finally, we say goodbye to them and change your clothes before heading back to your hotel. **What an amazing experience!**

SERVICE TYPE	PRICES PER PERSON IN THAI BAHT					
	1 PAX	2 PAX	3 PAX	4-5 PAX	6-7 PAX	8 PAX UP
Private Tour (8-9 hours)	7,500	4,250	3,700	3,300	3,150	3,000

TOUR INCLUDES : Roundtrip transfer from/to the hotel, transportation for tour (VIP air-con Car/Van), professional English speaking guide, admission fees, lunch, drinking water and travel accident insurance.

TOUR EXCLUDES : Other optional tours & meals than mentioned in the program, personal expenses.

Remark:

1. You will join activity with other people for Elephant program. We try and make our tour as fun and interactive as possible and encourage our guests to interact with each other. You'll have a chance to meet others while still being able to step away after the tour is over.
2. Program may be subject to change due to available schedule and any other unforeseen reasons.



AP GOOD @ TRAVEL (LICENSE NO. 21/01124)
14/1 Moo 8, Samoeng Tai, Samoeng, Chiang Mai 50250 Thailand
Tel. / WhatsApp / Line: +66801256611
E-mail: apgoodattravel@gmail.com www.apgoodattravel.com



APE-03: One Day Elephant Experience and Sticky Waterfall



We depart from your hotel at 09:00 a.m. to the local elephant park which takes about 1 hour and 15 minutes. You will be taking part of elephant care and their everyday needs which includes feeding, bathing and walking with them for exercise. **It is an amazing experience in which you get to see and feel them.** We say goodbye to them and change your clothes. After lunch, we drive to Bua Thong Waterfall. **This waterfall is known as “The Sticky Waterfall”.** Bua Thong Waterfall is multi-tiered waterfall made of limestone deposits. The limestone is amazing. It actually sticks to your feet and allow you to walk up and down the waterfall with rushing water all around. **You will enjoy a climb up and down as like as Spider man. What an amazing experience!**

SERVICE TYPE	PRICES PER PERSON IN THAI BAHT					
	1 PAX	2 PAX	3 PAX	4-5 PAX	6-7 PAX	8 PAX UP
Private Tour (8-9 hours)	7,500	4,250	3,700	3,300	3,150	3,000

TOUR INCLUDES : Roundtrip transfer from/to the hotel, transportation for tour (VIP air-con Car/Van), professional English speaking guide, admission fees, lunch, drinking water and travel accident insurance.

TOUR EXCLUDES : Other optional tours & meals than mentioned in the program, personal expenses.

Remark:

1. You will join activity with other people for Elephant program. We try and make our tour as fun and interactive as possible and encourage our guests to interact with each other. You'll have a chance to meet others while still being able to step away after the tour is over.
2. Program may be subject to change due to available schedule and any other unforeseen reasons.



AP GOOD @ TRAVEL (LICENSE NO. 21/01124)
14/1 Moo 8, Samoeng Tai, Samoeng, Chiang Mai 50250 Thailand
Tel. / WhatsApp / Line: +66801256611
E-mail: apgoodattravel@gmail.com www.apgoodattravel.com



APE-04: One Day Elephant Experience and Zipline



We depart from your hotel to Phoenix Adventure Park. Here you will entertain yourself with **exciting activities with Zipline 24 Platforms (14 Ziplines, 1 Lego Bridge, 1 Grass walk, 1 Window walk, 1 Miller belt, 5 Spiral staircase and Miniature train for round place)**. After lunch, we drive to the local elephant park. You will be taking part of elephant care and their everyday needs which includes feeding, bathing and walking with them for exercise. **It is an amazing experience in which you get to see and feel them.** Finally, we say goodbye to them and change your clothes before heading back to your hotel. **What an amazing experience!**

SERVICE TYPE	PRICES PER PERSON IN THAI BAHT					
	1 PAX	2 PAX	3 PAX	4-5 PAX	6-7 PAX	8 PAX UP
Private Tour (8 hours)	9,000	5,250	4,800	4,500	4,350	4,250

TOUR INCLUDES : Roundtrip transfer from/to the hotel, transportation for tour (VIP air-con Car/Van), professional English speaking guide, admission fees, lunch, drinking water and travel accident insurance.

TOUR EXCLUDES : Other optional tours & meals than mentioned in the program, personal expenses.

Remark:

1. Age between 6 - 65 years old, minimum height 120 cm and maximum weight 120 Kilograms (264 pounds) for Zipline program. Children and adult is the same price.
2. You will join activity with other people for Elephant program. We try and make our tour as fun and interactive as possible and encourage our guests to interact with each other. You'll have a chance to meet others while still being able to step away after the tour is over.
3. Program may be subject to change due to available schedule and any other unforeseen reasons.



AP GOOD @ TRAVEL (LICENSE NO. 21/01124)
14/1 Moo 8, Samoeng Tai, Samoeng, Chiang Mai 50250 Thailand
Tel. / WhatsApp / Line: +66801256611
E-mail: apgoodattravel@gmail.com www.apgoodattravel.com



APE-05: One Day Elephant Experience and Whitewater Rafting



We depart from your hotel at 08:00 a.m. to the local elephant park which takes about 1 hour and 15 minutes. You will be taking part of elephant care and their everyday needs which includes feeding, bathing and walking with them for exercise. **It is an amazing experience in which you get to see and feel them.** We say goodbye to them and change your clothes before heading back to the local restaurant. After lunch, we drive to the **start point for Whitewater Rafting. Northern Thailand is the perfect location for exciting whitewater.** With its warm, tropical weather, steep mountains, and beautiful scenery, the Mae Taeng is the nexus of fun in northern Thailand. A full safety talk is standard on all trips and is given by English speaking staff. A detailed understanding of the trip, its schedule, safety, and routine is instilled into each guest before any trip commences in order to better serve you. Each trip is supervised by experienced guides and dedicated safety personnel, ensuring that **our international standards of safety are upheld.** Experience an **unforgettable Whitewater Rafting among the beauty of the rainforest and remote areas of Northern Thailand** as we follow the rivers through wild jungle and gorgeous scenery. **We would recommend this adventure to anyone and wanting to see the beautiful countryside.**

SERVICE TYPE	PRICES PER PERSON IN THAI BAHT					
	1 PAX	2 PAX	3 PAX	4-5 PAX	6-7 PAX	8 PAX UP
Private Tour (8-9 hours)	9,000	5,250	4,800	4,500	4,350	4,250

TOUR INCLUDES : Roundtrip transfer from/to the hotel, transportation for tour (VIP air-con Car/Van), professional English speaking guide, admission fees, lunch, drinking water and travel accident insurance.

TOUR EXCLUDES : Other optional tours & meals than mentioned in the program, personal expenses.

Remark:

- Children between the ages of 7 and 12 are welcome to accompany their parents on the raft, but we ask that they skip the 2km stretch of class IV rapids as they can be too dangerous for small children.
- Things to bring: Swimming suit, Shoes, towel, change of your cloth and waterproof bags for phones/cameras, etc.
- Program may be subject to change due to available schedule and any other unforeseen reasons.



AP GOOD @ TRAVEL (LICENSE NO. 21/01124)
14/1 Moo 8, Samoeng Tai, Samoeng, Chiang Mai 50250 Thailand
Tel. / WhatsApp / Line: +66801256611
E-mail: apgoodattravel@gmail.com www.apgoodattravel.com



NIGHT TOUR

TOUR INCLUDES :

Round trip transfer from/to the hotel, transportation for tour (VIP air-con Car/ Van), professional English speaking guide, admission fees, drinking water and travel accident insurance.

TOUR EXCLUDES:

Other optional tours & meals than mentioned in the program, personal expenses.

Note

1. Prices are quoted in Thai Baht.
2. Rates are subject to change without prior notice.
3. Children price:
 - Children under 2 years old and high lower than 90 cm Free
 - Children 2- 7 years old and high 90-135 cm Charge 50 % from Adult Price
 - Children 5-10 years old, but higher than 135 cm Charge Adult Price
 - Children from 10 years and above Charge Adult Price



AP GOOD @ TRAVEL (LICENSE NO. 21/01124)
14/1 Moo 8, Samoeng Tai, Samoeng, Chiang Mai 50250 Thailand
Tel. / WhatsApp / Line: +66801256611
E-mail: apgoodattravel@gmail.com www.apgoodattravel.com





APN-01: Chiang Mai Night Safari



At Chiang Mai Night Safari, you will enjoy observing wildlife at night safari on Jaguar Trail by walking, on Predator Prowl and Savanna Safari by tram. Most of animals live freely in the open environment, and as a tourist you can feel the atmosphere of excitement. You can also enjoy Night Predators show, Tiger show and Dancing Shows.

Day Safari time: 13:00-16:00 p.m.
Night Safari time: 17:30-22:00 p.m.

Children Price

- Children under 100cm. **Free**
- Children 100-139 cm. **Charge 50 % from Adult Price**
- Children 140 cm. up **Charge Adult Price**

SERVICE TYPE	PRICES PER PERSON IN THAI BAHT					
	1 PAX	2 PAX	3 PAX	4-5 PAX	6-7 PAX	8 PAX UP
Private Tour (3 ½ - 4 hours)	3,600	2,400	2,000	1,800	1,600	1,500

TOUR INCLUDES : Round trip transfer from/to the hotel, transportation for tour (VIP air-con Car /Van), professional English speaking guide, **admission fee and a tram ride**, drinking water and travel accident insurance.

TOUR EXCLUDES : Other optional tours & meals than mentioned in the program, personal expenses.

Remark: Program may be subject to change due to available schedule and any other unforeseen reasons.



AP GOOD @ TRAVEL (LICENSE NO. 21/01124)
14/1 Moo 8, Samoeng Tai, Samoeng, Chiang Mai 50250 Thailand
Tel. / WhatsApp / Line: +66801256611
E-mail: apgoodattravel@gmail.com www.apgoodattravel.com



APN-02: Chiang Mai Night Street food & Market Tour



We depart from your hotel at 06:30 p.m. to the old city. **Enjoy a lively night in Chiang Mai town, wandering through the South Gate of the old city to the traditional street food market that opens every evening.** During the walk, you will be tempted by the heady aromas emanating from the various food stalls and simple carts. The guide will be on hand to introduce the many local dishes on offer. **You will be able to try all the dishes they fancy. Some of the most delicious dishes on offer include kanom jeen (rice noodles with curry soup), kanom krok (Thai coconut pudding), Northern Thai delicacies, stewed pork leg, coconut dumplings and Sweet mango with sticky rice (8 different dishes).**

SERVICE TYPE	PRICES PER PERSON IN THAI BAHT					
	1 PAX	2 PAX	3 PAX	4-5 PAX	6-7 PAX	8 PAX UP
Private Tour (2-2½ hours)	3,500	2,000	1,800	1,600	1,500	1,400

TOUR INCLUDES : Round trip transfer from/to the hotel, transportation for tour (VIP air-con Car /Van), professional English speaking guide, drinking water, travel accident insurance and **various street food dinner.**

TOUR EXCLUDES : Other optional tours & meals than mentioned in the program, personal expenses.

Remark: Program may be subject to change due to available schedule and any other unforeseen reasons.



AP GOOD @ TRAVEL (LICENSE NO. 21/01124)
14/1 Moo 8, Samoeng Tai, Samoeng, Chiang Mai 50250 Thailand
Tel. / WhatsApp / Line: +66801256611
E-mail: apgoodattravel@gmail.com www.apgoodattravel.com





APN-03: Khan Toke Dinner



Here you can enjoy an **authentic Thai dinner within the atmosphere of northern Thai Style culture**. You will be served the Northern food which include **sticky rice, fried pork rinds, northern chili paste, Hang Lay pork curry, Deep fried chicken** on the small round table called a “Toke”, which is an important part of continuing the culture and local Lanna. While having your meal, you will be entertained by a **Northern Cultural Performance**. A special meal such as **Halal food (No pork)** and **Vegetarian food** can be requested at the time of booking.

Pick up time at 06:30 p.m.

SERVICE TYPE	PRICES PER PERSON IN THAI BAHT					
	1 PAX	2 PAX	3 PAX	4-5 PAX	6-7 PAX	8 PAX UP
Private Tour (2-2½ hours)	3,500	2,000	1,800	1,600	1,500	1,400

TOUR INCLUDES : Round trip transfer from/to the hotel, transportation for tour (VIP air-con Car /Van), professional English speaking guide, drinking water, travel accident insurance and **Khan Toke dinner**.

TOUR EXCLUDES : Other optional tours & meals than mentioned in the program, personal expenses.

Remark: Program may be subject to change due to available schedule and any other unforeseen reasons



AP GOOD @ TRAVEL (LICENSE NO. 21/01124)
14/1 Moo 8, Samoeng Tai, Samoeng, Chiang Mai 50250 Thailand
Tel. / WhatsApp / Line: +66801256611
E-mail: apgoodattravel@gmail.com www.apgoodattravel.com

